



CHURCH HILL NEWSLETTER

COMMITTED TO INFORMING THE RESIDENTS OF CHURCH HILL
MAY 2008

THE BELLE OF THE JAMES

by John Johnson, Friend of the James River Parks

OK, now that you have read about the continents colliding, the Indians, slaves and the polluters of the James, it is time to tell you about the most natural and beautiful park in Richmond - Belle Isle.

Belle Isle is a 65 acre island in the James River designated a City Park in 1973. It is accessible to pedestrian and bicycle traffic via a 1,100 foot-long footbridge suspended beneath the Lee Bridge and from the Southside via Reedy Creek Park House Road. The island is part of the James River Park system and was occupied first by native Powhatan Indians as a fishing village and then later explored by Captain Christopher Newport in 1607. Belle Isle, according to the Canal Society Atlas, was originally called Broad Rock Island because of a very prominent granite rock outcrop at the extreme West end of the island. The outcrop was extensively quarried for years for granite to build Richmond City buildings, until a larger than necessary dynamite charge cracked the bedrock, allowing water to constantly flow and fill the main quarry. This prominent rock diverted water around the island and allowed sand and silt sediment to form at the much flatter 15 acre Eastern end. It is interesting to note that the river flowed on the South side of the island until large floods in the last 100 years diverted the flows mostly to the North side.



The Isle's first owner was the first William Byrd who also owned much of the land in and around Richmond. His family held onto it for more than 100 years and he visited many times. He remarked that the water flowing through the island (Hollywood Rapids) were, "louder than a scolding wife's tongue". The island was used as a fishery in the 18th century and then in 1814, as The Old Dominion Iron and Nail Co., one of the biggest nail suppliers in the country. In the 1860s, the island had its own village, including a church, store and school.

It was also a prominent place during the Civil War as it held thousands of Union enlisted soldiers there after July 1862. Approximately 30,000 people were held in a few small shacks and small tents. The island afforded no protection from the elements; hence exposure to weather played a large role in the death toll. On cold nights the prisoners packed together in tight clusters to keep warm. Those in the center did well, those on the outside froze. On very cold nights the corpses would lie curled on the ground like the shriveled petals of a dying flower. The old Richmond and Petersburg Railroad Bridge delivered the prisoners there and took away the deadthus it was called, "The Bridge of Sighs".

The river, cannon and rifle pits along with an 8-foot deep trench and high earthen berm effectively discouraged escape attempts. Prisoners were warned not to cross a line near the trench/berm or be shot dead. This is where the term "deadline" is thought to have originated.

Continued on Timely & Noteworthy.....

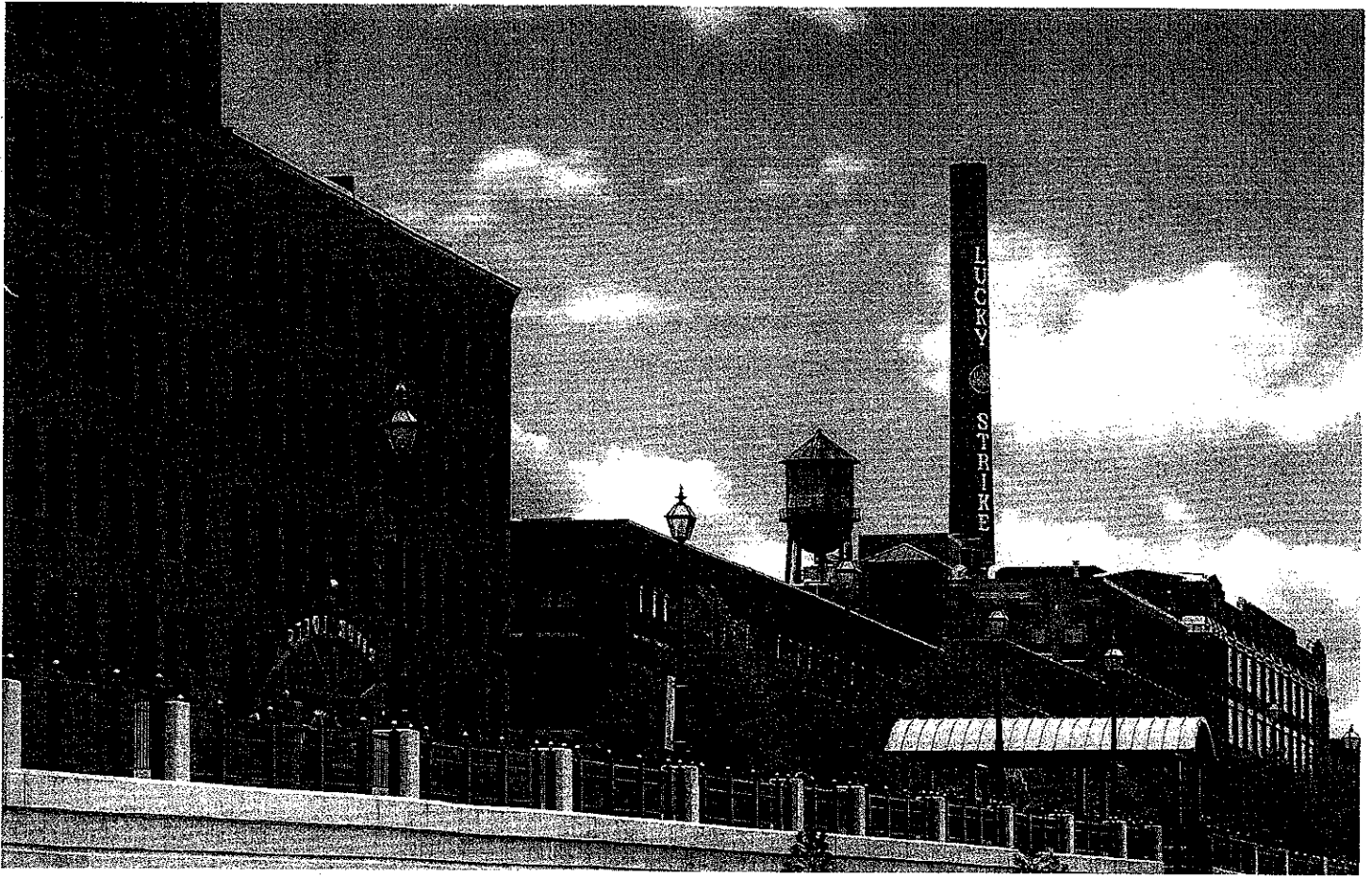
WEBSITE: www.churchhillrichmond.com

E-MAIL: newsletter@churchhillrichmond.com

Next General Membership Meeting

7:00pm Tuesday, May 20, 2008

at St. John's Church Parish Hall



Richmond's Finest Living is at The River Lofts at Tobacco Row

CUTTERS RIDGE



LUCKY STRIKE

Historic Setting • Prestigious Address • Exciting Location
804.648.8888 / www.TheRiverLofts.com
2300 E. Cary St. • Richmond, VA 23223



BOARD of DIRECTORS

PRESIDENT

Jim Daab • 649-1913
jim@mysterydinner.com

VICE PRESIDENT

John Johnson • 814-1066
mksm1@msn.com

SECRETARY

Logan A. Vetovec • 222-2214
lavetovec@vcu.edu

TREASURER

Karen Flanders • 814-9084
seahorse08051@hotmail.com

ASSISTANT TREASURER

John Whitworth • 644-6559
John.w-cha@comcast.net

DIRECTORS AT LARGE

Tony Monteleone • 643-5835
tamonteleone@yahoo.com

Beth Sarrett • 690-8703
bsarrett@comcast.net

Aimee Perron Seibert • 647-3140
apseibert@gmail.com

Rob Pate • 344-0008
renovator13@hotmail.com

Bill Pickering • 643-1025
billytodd@verizon.net

Immediate Past President

Richard Worssam • 226-4447
Richard608@comcast.net

ADVERTISING INFORMATION

The deadline for submission of ad copy is the 25th of the month for ads to be included in the following month's newsletter. E-mail submission of ads is preferred. Ads are black and white and can be accepted in .pdf, .jpeg, .pub or Word .doc format via e-mail to:

newsletter@churchhillrichmond.com

Payment must accompany the copy/ad or be received prior to the publication date in order for the ad to be included in the newsletter.

NOTE: A discount of 10% is provided for pre-paid advertising for three or more months. Ad copy may be changed as long as it is received before the usual deadline.

Please submit ad copy electronically. Send payment to CHA Newsletter, P.O. Box 8031, Richmond, VA. 23223.

Questions? Please contact Trish Bernal at 643-2420 or at trishbernal@gmail.com.

FULL PAGE BACK COVER \$80

FULL PAGE INSIDE FRONT COVER \$75

FULL PAGE INSIDE \$70

HALF PAGE \$40

QUARTER PAGE \$30

CENTERFOLD (TWO FULL PAGE ADS) \$130

Full page is 8 ½ x 11 with at least a ½ border all around. A half page ad would be no more than 7 ½W x 5H (landscape), and a quarter page ad would be 3 ¾W x 5H (portrait).

The Church Hill Newsletter is distributed by volunteers throughout the Church Hill neighborhood (North and South of Broad Street) and to many of the apartments in the Shockoe Bottom area (including Tobacco Row, Superior Building, and the Poythress Apartments). We also distribute through several local restaurants and area merchants. A total of 1400 issues are distributed each month.

EDITORIAL POLICY

The newsletter is published monthly except for a combined November/December issue. All official opinions of the CHA are found in the minutes of the meetings. All other opinions expressed in the newsletter are the opinions of the individual author. All submissions are welcome. The editorial policy does not permit personal attacks, profanity or anonymous submissions. Submissions may be edited for space. Final approval rests with the Board of Directors. Please submit all articles/letters as e-mails to newsletter@churchhillrichmond.com

VOLUNTEERS WELCOME!

Newsletter Editor:

Erika Gay 648-1650

Newsletter Advertising Coordinator:

Trish Bernal 643-2420

Membership Coordinator:

Lee Ann & Bill Pickering 643-1025

Church Hill Planters:

Marion Macdonald 644-1347

Newsletter Distribution:

Tom & Eileen Sanders 343-7157 (south)

Bill Sullivan 644-8815 (north)

Church Hill Crime Watch:

Shelby Long 648-2710

Clean & Safe:

Chris Bergen 640-4084

Zoning Committee:

Beth Sarrett 690-8703

Summer Picnics:

Looking for volunteers!!!!



2401 E. BROAD ST.

PARISH ADMINISTRATIVE CENTER IS LOCATED AT 2319 E. BROAD ST.
649-7938

www.historicstjohnschurch.org

Come Share Our FELLOWSHIP & SPIRITUAL GROWTH

SUNDAY SERVICES ARE 8:30 & 11:00 a.m.

SUNDAY SCHOOL for Children and Adults at 9:30 a.m.

Our new Interim Rector, Alan Mead, and his wife Pat are living on Church Hill

SPECIAL EVENT IN MAY

Saturday, May 17, 2:00 – 5:00 p.m., St. John's Parish Hall

The Richmond Sacred Harp Singers

The Concert is free, all are welcome!

The Parish administrative Center is Closed May 23rd & May 26th, Memorial Day weekend

“Liberty or Death” Reenactments

The Patrick Henry Committee invites you to join us for historical reenactments of the Second Virginia Convention of March 1775. In the presence of Washington, Jefferson and other notable Virginians, Patrick Henry delivered his passionate call for liberty, uttering the immortal words *“give me liberty or give me death!”*

Summer Sundays Memorial Day Weekend, May 25 through Labor Day Weekend, August 31

- | | |
|-----------|---|
| 1:00 p.m. | Free tickets are distributed at the front door. |
| 1:15 p.m. | Seating begins. |
| 1:30 p.m. | Patriotic music program, performed on the organ by Mr. Robert Copeland. |
| 2:00 p.m. | Reenactment program begins. |

Guided Tours: 10:00-4:00 Monday thru Saturday, 1:00-4:00 Sunday

Our Gift Shop contains a unique assortment of historical mementos and gift items. Visit us soon to pick up your copy of “Liberty or Death,” an educational PBS program with Pulitzer Prize-winning historians discussing the events in Virginia that led to the American Revolution and a reenactment of Patrick Henry’s famous speech.

**Visitor Center
804-648-5015**

www.historicstjohnschurch.org

PRESIDENT'S MESSAGE



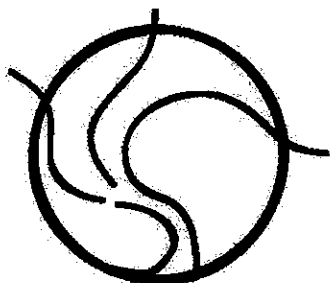
As president of the CHA for the last year, every month I have been granted space in this newsletter to write the traditional "Message from the President." Some months I have taken advantage of that opportunity, and some months I have not, because (and I know some of you may find this very hard to believe) I had nothing to say. Most of my writings have encouraged participation in the association, and comforting as I know consistency can be in our hectic lives, this month will be more of the same.

The May membership meeting brings the election of officers and board members. There should be a slate of candidates listed in this newsletter, but nominations from the floor are also accepted. I strongly urge you to come vote. These are the folks that will help set the direction the CHA will take over the next year.

At this meeting, we will also be voting on some changes to the association by-laws. Over the past few months, the board has been examining these by-laws, and have recommended some changes to help the organization run in a more efficient and consistent manner.

I want to thank the membership for allowing me to serve this past year. Have a great summer, and I'll see you at the picnics.

Jim Daab



btr enterprises, inc
simply classic transformations
~distinctive craftsmanship~

Transformation of old homes is a passion for us.
We adopt a recycle, reclaim, reuse, replant philosophy.

Hardiplank®/clapboard installation

Interior/exterior trimwork

Fence and porch work

Hardwood, cork, bamboo, laminate flooring

Custom concrete countertops

Custom interior work

Custom tile work

Wood rot repair

We live and work in historic Church Hill. References available.

Call us directly for free estimates/consultation.

We are environmentally conscious

Derek Metzler, 644-1221

btrinc@verizon.net



CHURCH HILL
Animal Hospital

CHURCH HILL ANIMAL HOSPITAL IS CELEBRATING 5 YEARS IN THE NEIGHBORHOOD AND WOULD LIKE TO THANK EVERYONE FOR THEIR REMARKABLE SUPPORT.

LOCATED AT THE CORNER OF 25TH AND MARSHALL STREETS,
ONE BLOCK NORTH OF ST. JOHN'S CHURCH.

MAKE YOUR APPOINTMENT TODAY AT 644-8200



urban
PAINTERS

Offered services:

Interior and exterior painting
Designer assisted color consultation
Minor sheetrock and wood repair

*For a free estimate,
please call us at*

517-8113

Putting the craftsmen's tradition back into the city!

THOMPSON DAVIS

ASSET MANAGEMENT

TD&CO.

An independent private money manager providing individuals, businesses, foundations and retirement plans with a disciplined and uniquely focused growth and value oriented investment management.

**At Thompson Davis Asset Management
we trust our disciplined and focused
investing process enough to follow it.
As an independent private 100% employee owned firm
with deep roots in the Richmond community,
we invest along with our clients
sharing the same risks and rewards,
truly aligning our interests.**

**Does your current asset manager have
the same incentive to watch your portfolio?**

**919 E. Main Street
16th Floor
Richmond, VA 23219**

804-644-6380

***Brochure and Form ADV Part II upon request
Member FINRA/SIPC*

***Please visit our website for more information:
www.thompsondavis.com***

TIMELY & NOTEWORTHY



Summer Alley Rally
June 14th
8:00am

Meet at the Park House at Libby Hill Park

Again this time we will have three compactor trucks and one stake body truck. For more information call Chris Bergen 640-4084.

 **green leaf gardens**

**Relax and leave the
yard work to us.**

Call today 239-4639

VSLD certified designer, VNLA
certified horticulturist

www.GardensbyGreenLeaf.com



FRIENDS OF CHIMBORAZO PLAYGROUND SEEKS INPUT AND IDEAS

The Chimborazo Park playground at N. 29th and 31st Street is a neighborhood gathering space where you can regularly find children enjoying the play equipment, kids and adults involved in a game of basketball, teenagers skateboarding, and adults playing pétanque. It's also a place where you can regularly find broken bottles and dangerous garbage littering the playground where children play. Graffiti covers the jungle gym and transients defile the storage facility. Lack of lighting transforms the playground into a nighttime haven for potential danger.

To turn around the decline and safety issues at the playground and recreational area, neighbors have organized a new Friends of Chimborazo Playground group. This group aims to improve the safety and quality of the playground and recreational area and provide a safe, beautiful place for community members of all ages to play, gather and enjoy.

Concerned individuals worked with local police and park officials to increase patrols, remove tree debris and clean up litter. Problems, however, continued and neighbors saw the need to organize efforts.

The Friends of Chimborazo Park seeks new members and community input on park improvements. The group is a new partner of the Richmond Recreation & Parks Foundation.

"Geographically, Chimborazo Playground sits in the very heart of our community, so it should be as vibrant, diverse and beautiful as our community, and a place where neighbors of all ages can gather," said Bridgette Huff, a founding member of Friends of Chimborazo Playground.

The group is partnering with the Richmond Dept. of Parks & Recreation (RDPF) for the new redesign of Chimborazo Park. An upcoming focus group meeting with the RDPF will be held on May 5 at 6:30 pm in St. John's Parish Hall.

Please share your ideas for park improvements at www.imaginechimbo.org. "We want the community to share their ideas for how to improve the park." Some ideas include better lighting at night to address crime, water fountains, public art, a community garden and benches for pétanque players. The group may also share ideas with the RDPF at the next focus group meeting.

To learn more about becoming a member or how you can help, contact bridgette@imaginechimbo.org or visit www.imaginechimbo.org.

Landscape Design & Installation

Big Plans for Your Small Yard?

For more information - Please visit our web page:
www.richmondcityscapes.com

Richmond Cityscapes

John Anderson
382-2276



River District Schedule of Events 2008

Brought to you by Venture Richmond

Continuing Events in May

River District Canal Cruises

(Spring Season through June 8th)

Canal Turning Basin - Dock and 14th Streets, Friday-Saturday Noon-7pm, Sunday Noon-5pm, \$5 adults, \$4 seniors & children 5-12, age 4 and under free
40-minute historically narrated tours of the James River & Kanawha Canal along the River District's Canal Walk. Tour begins every hour on the hour. Private charters also available. For more information call 804-649-2800 or visit www.venturerichmond.com.

Thursday Fresh Market

17th Street Farmers' Market, Free admission, 8:30am-2pm
From farm to market - It's *that* fresh! Locally grown organic and homegrown produce straight from the region's farms to your home, along with the finest quality homemade and handcrafted items made by highly artistic Richmonders. Free parking. For more information call 646-0477 or visit www.17thstreetfarmersmarket.com.

Fridays, May 9th - June 27th

Friday Cheers

Brown's Island, Free admission, 6:00-9:30pm
Venture Richmond's FREE signature Friday night summer concert series is back on Brown's Island for its 24th season and promises to feature some of the nation's hottest touring acts, along with some regional favorites. Again this year Friday Cheers will offer eight concerts and is focused on a variety of performers that may only be in the Region once this summer. Presented by: Coors Light and Yuengling. Sponsored by: Mix 103.7, 96.5 The Planet, K95, Y101, Style Weekly, Plan 9 Music, BlackFinn, Pepsi, James River Cellars, Crowne Plaza. Produced by: Venture Richmond. For more information call 804-788-6466 or visit www.venturerichmond.com.

Saturday Bohemian Market

17th Street Farmers' Market, Free admission, 9am-4pm
An eclectic mix of farm fresh, homegrown produce blended with the highest quality handmade and homemade products, accented with a few vintage classics for all free spirits doing some weekend wandering in Shockoe Bottom. Free parking. For more information call 646-0477 or visit www.17thstreetfarmersmarket.com.

Sunday Vintage Market

17th Street Farmers' Market, Free admission, 9am-4pm
It's not old, it's *retro*! Sundays bring out the best mix of vendors in Shockoe Bottom: antiques, collectibles, jewelry and the finest arts & crafts made by local Richmonders. Free parking. For more information call 646-0477 or visit www.17thstreetfarmersmarket.com.

Poe Goes Pop: Poe in Comics

Edgar Allan Poe Museum (1914 E. Main Street), Museum admission \$6 for adults, \$5 for students, seniors, AAA members and members of the armed forces. The exhibit will run through October 31st
Explore Poe's world as seen through the eyes of comic book artists. Includes rare early adaptations of Poe's work through to contemporary interpretations. For more information visit www.poemuseum.org or call 804-648-5523.

Special Events in May

Saturday, May 10th Susan G. Komen Race for the Cure®
Kanawha Plaza (9th & Canal Streets), Fee for participants, Free for spectators, 7:45-10:00am

Events such as the Susan G. Komen Race for the Cure® allow the Richmond Affiliate to advance the Susan G. Komen for the Cure's mission of eradicating breast cancer as a life threatening disease by advancing research, education, screening and treatment programs. This family fun day brings thousands of people to celebrate survivors and remember those who have lost the battle with breast cancer. For more information call 804-796-RACE or visit www.komenrichmond.org.

Saturday, May 17th GREAT STRIDES, Walk-a-thon for Cystic Fibrosis

Canal Turning Basin - Dock and 14th Streets, Fee for participants, Free for spectators, 9:30am-1:00pm
Benefits the Cystic Fibrosis Foundation. For more information call 804-527-1500 or visit www.cff.org/chapters/virginia/greatstrides.

* Schedule Subject to Change

**RIVER
DISTRICT**
Start Here

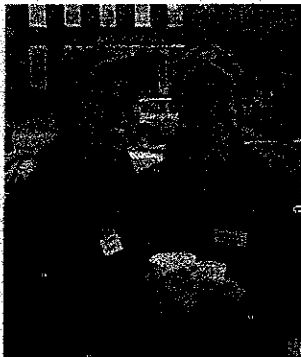
On March 29 neighbors and friends from around Richmond came to Libby Hill Park to mulch and plant trees.



Sixty folks came out on a cool Saturday to learn and help our Church Hill arborists; Norm Brown and Scott Franz plant six trees, donated by Richmond Division of Urban Forestry, Glen Allen Nursery, and Richmond Tree Stewards. Approximately 80 cubic yards of mulch were donated by Richmond Parks and Recreation.

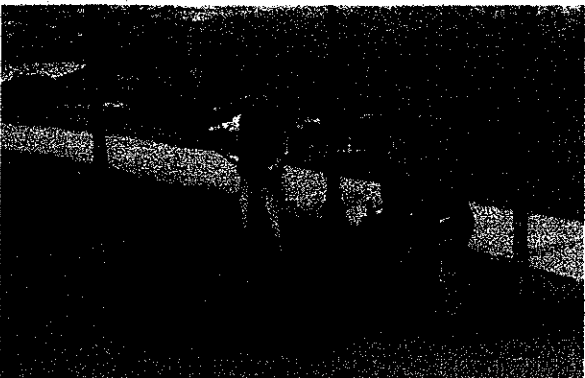


Christopher is leaving for Brazil to work as an environmental engineer. We wish him luck! Blue will stay with Lu.



Katherine and Marshall Schutt after mulching, enjoy coffee donated by Captain Buzzy's at Broad and 27th.

Alli Alligood and Marion Macdonald explain to WRIC-TV the importance of planting more trees in urban areas to combat global warming. Also that Richmond cuts down many more trees every year than they plant. And citizens must step up and do their part to fill this gap.



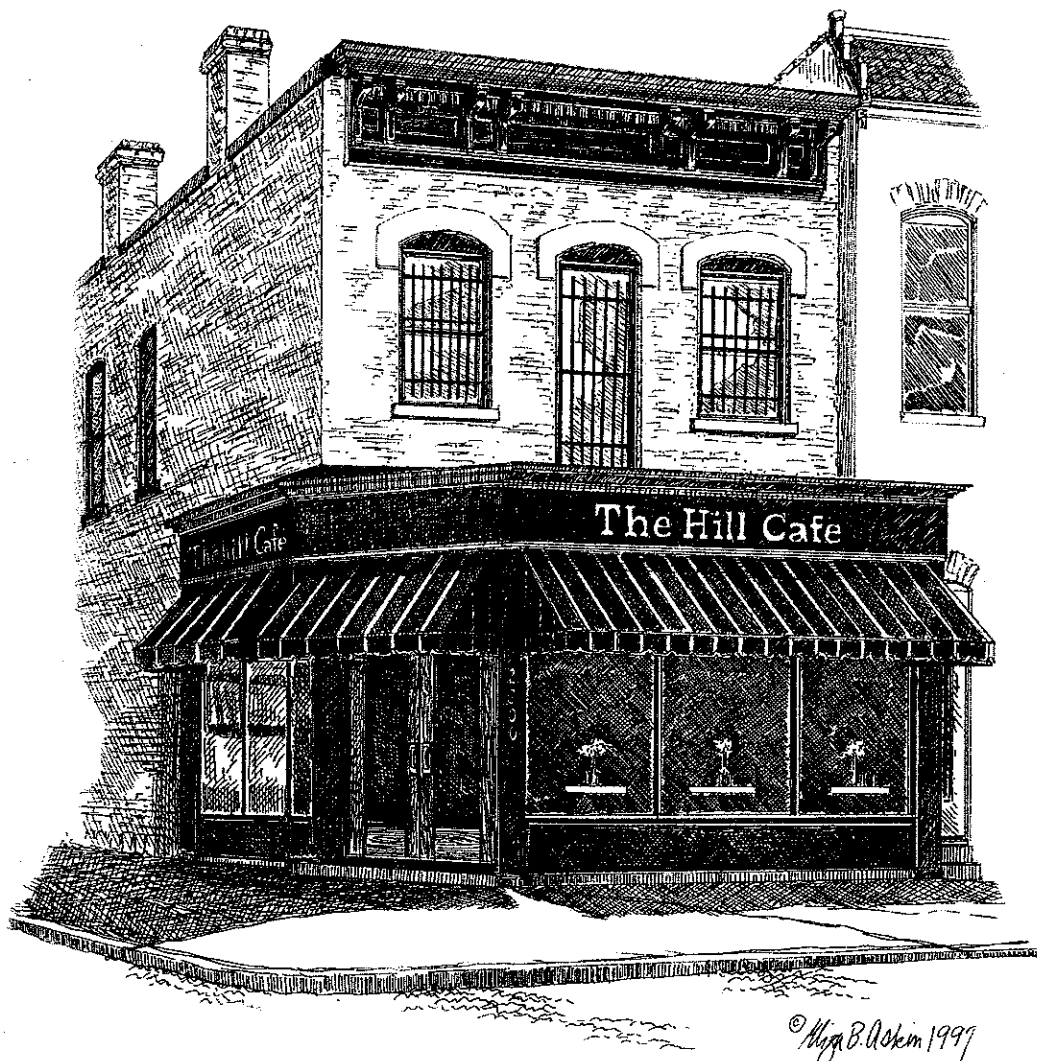
Trees absorb water better with mulch-- not competing with grass. Plus, the mulch keeps the mowers away.



Norm Brown explains to Mark Economy the fine points on finding the root flare of a tree.



Luke McCall of Urban Forestry with his son, Jude.



Daily Specials

| | |
|--|---------|
| Monday is "Blue Plate Specials" only | \$7.95 |
| Tuesday Is "Three course Dinner" only | \$15.95 |
| Wednesday is "Crab Cake Dinner" just | \$16.95 |
| Thursday Is "Hill Café BBQ Specials" starting at | \$12.95 |
| Sunday Is "Hill Café Baked Spagetti" only | \$7.95 |

Don't miss Sunday Brunch from 10:30-3:00

2800 E. Broad St. ~ Richmond, VA ~ 648-0360

Appetizers

| | |
|--|--------|
| Hill Café House Made Chips served with a creamy cracked peppercorn dressing | \$4.95 |
| Thai Chicken Lettuce Wraps julienned carrots, cucumbers, leaf lettuce with a sweet and dipping spicy sauce | \$7.95 |
| Vegetarian Black Bean Cakes pan seared and served with cilantro and homemade dill crème fraiche | \$6.95 |
| Mozzarella and Tomato Napoleon fresh mozzarella, basil and tomatoes served with balsamic reduction | \$6.95 |
| Flash Fried Crispy Calamari lightly dusted and flash fried served with a chipotle aioli..... | \$6.95 |
| Artichoke and Spinach Fritters coated with panko, lightly fried and served over our house marinara | \$6.95 |
| Sesame Seared Ahi-Tuna served chilled and rare with pickled ginger, wasabi and soy sauce | \$7.95 |
| Fall Off The Bone BBQ Ribs slow braised and served with our chipotle honey rib glaze | \$6.95 |
| Roasted Garlic Hummus Platter with roma tomatoes, pepperoncinis, black olives and grilled pita bread..... | \$6.95 |
| Flaming Saganaki and Grilled Pita Bread soft kasseri cheese served flaming served with lemons wedge | \$6.95 |
| Chesapeake Crab Dip tossed with lump crab meat and served with flash flour tortillas..... | \$7.95 |
| Maryland Crab Cakes three pan seared mini crab cakes and topped with key lime remoulade | \$8.95 |
| Pan Seared Sea Scallops with an apple wood smoked bacon beurre blanc and micro greens | \$9.95 |
| Southwestern Chicken Quesadilla with black beans, shitake mushrooms, spinach and tomatoes | \$8.95 |

Sandwiches

Served with a pickle and a choice of fries, potato salad, pasta salad or slaw

| | |
|--|--------|
| Classic Burger grilled to temperature with lettuce and tomato on a Kaiser | \$6.95 |
| Black Bean Burger vegetarian burger seared and served on a Kaiser with dill crème fraiche | \$6.95 |
| The Hill Burger grilled and topped with caramelized onions, bacon and cheddar, served with barbecue sauce | \$8.95 |
| Cajun Chicken Wrap spiced rubbed chicken breast, tomato, onions and monterey jack in an herbed tortilla | \$7.95 |
| California Smoked Turkey with avacado, havarti cheese, bacon and a tomato aioli on multigrain bread | \$7.95 |
| Pulled Pork Barbecue hand pulled slow roasted pork with cole slaw and homemade barbecue sauce | \$6.95 |
| Chicken Salad BLT with golden raisins and tarragon on toasted multigrain bread | \$6.95 |
| The French Dip thinly sliced roast beef served on a grilled sour dough sub roll with au jus dipping sauce..... | \$8.95 |
| Blackened Ahi-Tuna lightly blackened ahi tuna served with a lemon aioli on a grilled kaiser roll | \$7.95 |
| Fried Oyster Poor Boy crispy fried select oysters served with a dill crème fraiche on a sour dough sub roll | \$7.95 |
| Vegetarian Wrap fresh spinach, portobello's, roasted red peppers and caramelized onions in a flour tortilla | \$6.95 |
| Maryland Crab Cake pan-seared to a golden brown and served with a key lime remoulade on a kaiser | \$9.95 |

Blue Plates

\$2.00 off from 11 to 6

| | |
|--|---------|
| Mom's Famous Grilled Meatloaf grilled to perfection and covered with our beef gravy | \$10.95 |
| Oven Roasted Turkey Breast oven roasted and topped with our traditional gravy | \$10.95 |
| Southern Fried Filet of Fish lightly breaded fried tilapia served with our key lime remoulade | \$10.95 |
| Crispy Country Fried Chicken two chicken breasts deep-fried to a golden brown..... | \$10.95 |
| Grilled Center Cut Pork Chop center cut 6oz pork chop served with our traditional gravy..... | \$10.95 |

Served with two side dishes. Macaroni and cheese, green beans, mashed potatoes or sautéed spinach

Entrees

Now Served all Day

| | |
|--|---------|
| Hill Café Baked Spaghetti homemade marinara with meat sauce topped with mozzarella and baked | \$10.95 |
| Italian Sausage and Ricotta homemade marinara sauce, penne pasta and ricotta cheese | \$11.95 |
| Crispy Fried Eggplant stuffed with artichokes, spinach and ricotta cheese over marinara sauce with spaghetti | \$12.95 |
| BBQ Pork Platter half a rack of our fall off the bone ribs, slow roasted pulled pork, cole slaw and french fries | \$14.95 |
| Cornmeal Fried Oysters served with sautéed spinach, rice and dill crème fraiche | \$16.95 |
| Penne Parmesan and Shrimp jumbo shrimp tossed with a roasted garlic cream and fresh parmesan | \$16.95 |
| Sesame Seared Ahi-Tuna with a wasabi and soy beurre blanc over asian vegetables with white rice | \$17.95 |
| Pan Seared Chilean Salmon with asparagus, mashed red skinned potatoes and a balsamic reduction..... | \$17.95 |
| BBQ Baby Back Ribs in a chipotle honey rib glaze with red skin mashed potatoes and sautéed asparagus..... | \$17.95 |
| Grilled Shrimp and Scallops with braised baby bok choy and purple cabbage, rice and soy butter | \$18.95 |
| Pan Seared Crab Cakes with red skin mashed potatoes, sautéed asparagus and a key lime remoulade | \$20.95 |
| Blackened Rib Eye topped with a tomato and avocado salsa with asparagus and mashed potatoes | \$20.95 |
| Grilled Filet Mignon with a balsamic port wine demi glace, crispy onions, asparagus and mashed potatoes | \$20.95 |

The

3300 Club

Where
History & Community
Meet



CHA Members
can join for
just \$50!

Since 1964

23rd & East Grace Streets
In Richmond's Historic Church Hill
804.644.2300

Summer Travel Plans?

Let us love your furry (or scaly) family members while you're away!

Church Hill Pet Sitters

Join more than **60** of your **Church Hill Neighbors** who are already **Satisfied Customers**

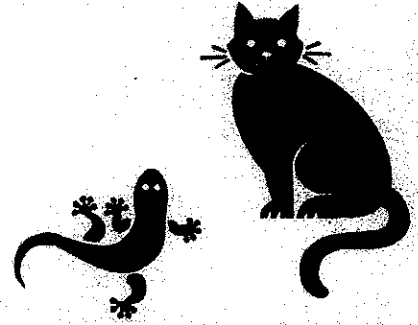
whose pets have benefited from the personalized care and attention.

Rates start at **\$7** per visit to your home

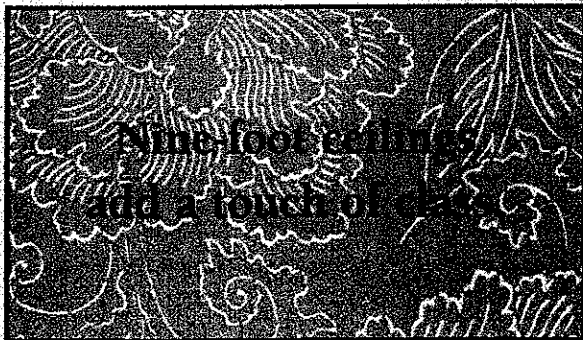
The Beckners

2907 East Broad Street
Richmond, VA 23223

Ph: 649-3038, 920-3536



References available upon request.



Nine-foot ceilings
add a touch of class.

So does a master
bedroom suite.

We bring new life to old homes.

Cabinetry &
Construction

INCORPORATED

WWW.CABINETRY-CONSTRUCTION.COM | 804.497.3491 | ROBWRIGHT@CABINETRY-CONSTRUCTION.COM

~~~~~CMS Revitalize~~~~~  
~~~~~Mobile Massage Services~~~~~

1 hour massage - \$70
90 minute massage - \$100
Corporate Chair massage - \$75 per hour, 1 ½ hour minimum
30 minute massage - \$40, 2 massage minimum

Travel and set up fee - \$10
Fee waived for Church Hill residents! (23223 zip code)

If you would like more than one massage at the same location,
each additional massage is \$10 off the original price!


Gift Certificates available!
I accept cash and checks only

Call or email today to schedule your appointment!
(Not available on Sundays or Mondays)

Carrie McKay Shelton, Nationally Certified Massage Therapist
cmsrevitalize@gmail.com
804-937-7891



FRIDAY CHEERS
PRESENTED BY COORS LIGHT AND YUENGLING
BROWN'S ISLAND
6:00-9:30 PM



**sashimi with
roasted quail,
sweet potato fries
and a chocolate
milkshake.**

If you crave it,
we've got a restaurant
that can serve it

**RIVER 7
DISTRICT**
Start Here

CHA BOARD MEETING



MINUTES OF THE APRIL 3, 2008

BOARD MEETING

By CHA Secretary, Logan Vetovec

President Jim Daab called the meeting to order at 7:05pm at the 2300 Club.

The attendees were:

- ✓ PRESIDENT, Jim Daab
- ✓ VICE PRESIDENT, John Johnson
- ✓ SECRETARY, Logan Vetovec
- ✓ ASSISTANT TREASURER, John Whitworth
- ✓ DIR. AT LARGE, Rob Pate
- ✓ DIR. AT LARGE, Aimee Perron Seibert

Treasurers Report: John Johnson presented the Financial Report for March 2008. At March 31, the CHA has \$46,000 cash in the bank. Cash receipts for the month were \$818, expenditures were \$1737, for a decrease in cash of \$918.

Committee Reports:

Zoning: No report.

Newsletter: The April Newsletter brought in over \$900 in ads.

Holiday Festival: A volunteer is needed to Chair the House Tours.

Clean and Safe: The date for the next Alley Rally will be published in the May newsletter.

Membership: No report.

Old Business: Irish Festival brought in 2 new memberships. The CHA shared a booth with CHAT. The following motion was passed:

Motion "To split the proceeds (less than cost) from the sale of water at the Irish Festival with CHAT."

The Board continued their discussion on amendments to the current By-Laws. The following motion was passed and will be presented to the membership:

Motion "(A) To amend the current CHA By-Laws to read that all members of the board be voting members."

"(B) The membership will be asked to ratify all prior decisions made by the board."

A second motion was passed with 5 in favor and 1 dissent.

Motion "To amend the CHA By-Laws so that the term of office will run from January 1st to December 31st and will coincide with the fiscal year."

Thus, elections will be held in October and new members will take office January 1. These proposed By-Law Changes will be presented in an upcoming newsletter.

New Business: None.

Having no further business the meeting was concluded at 8:30 pm.




**Custom Crafted
of
Solid Wood**

**Design
Installation**

Overmantels
Over Doors

www.themantelmaker.com
john@themantelmaker.com

Ph.: (804) 690-1977



Fair
&
SQUARE
QUALITY RENOVATIONS

ROB PATE
344-0008
350-0969



Below are brief biographies written by the new nominees running for the open positions on the Board of Directors of the Church Hill Association. Elections will be held at the May 20 General Membership meeting at 7:00pm at St. John's Church. Nominations will also be taken from the floor. All nominees shall be members of the Association at the time of their nomination.

Positions Open

Vice President

Secretary

Assistant Treasurer

Director at Large (2)

Confirmed Nominees

Vice President, Beth Sarrett

Let me take a few sentences to introduce myself. My name is Beth Sarrett, Beth being short for Elizabeth. The Church Hill area has been our home for about the past five years, although we have lived in the Richmond area for about fifteen years. I was raised not too far away, in a town exactly halfway between Washington D.C. and Baltimore. A speech-language pathologist by training, I have worked throughout my career in varied direct service and administrative capacities, including private practice, University, state agencies, public school systems and rehabilitation centers.

Each neighborhood in which I have lived, in my role as neighbor/resident, parent, and/or professional has seen my active participation in community, civic and "good neighbor" endeavors and support. It has been my privilege to continue in that vein, since moving to Church Hill, as a member of the Church Hill Association, along with involvement with other local organizations/activities.

After becoming a member of the CHA Zoning Committee, I subsequently assumed Chairmanship approximately three years ago. Last year, it was my honor to be elected to the CHA Board. I have also enjoyed volunteering with the Church Hill Holiday Weekend events during the past few years. This includes working on several Holiday Ball committees. It was my privilege to serve as Co-Chair for the 2008 Holiday Home Tour, allowing me to further acquaint myself with our community's neighbors and businesses. Membership in the Twenty-three Hundred Club, here in Church Hill, has resulted in my involvement in several of its committees and the Board.

Many of you would recognize my husband and I as avid walkers throughout our Church Hill and nearby neighborhoods, having now acquired "Church Hill feet", after a few knee and elbow scrapes. We routinely support local businesses. Our move to the area has now become our long-term plan, due to the wonderful folks we have met and now have as friends and acquaintances, true sense of community spirit, history, atmosphere and tradition, and many wonderful local events/activities and interaction opportunities. It is my intent to give back to this community that has brought so much enjoyment and experience into our lives.

Vice President, Sean Priest

I was born at Saint Mary's Hospital in Henrico County on Feb. 28th 1973. I have lived in Richmond and surrounding counties for most of all of my life minus 3 years in Charleston, S.C. where I graduated from Johnson and Wales Culinary School. I previously worked in the restaurant business for 15 years starting in High School. I have done everything from starting as a dish washer to finishing my career as a General Manager for 6 years. I have been married for 5 years and we have a one year old daughter. We have been in our home on 509 N. 27th for five months now and we are very eager to become involved in the community and The Church Hill Association. I am now in the Real Estate business with Hometown Realty. I started in Real Estate in 2004 and have been loving every minute of the business. I love the city and really want to get involved and see us utilize the river and bring more traffic into our beautiful capitol. As I work in the Real Estate world everyday, I see the amount of people moving from the counties into the city. As I stated before I have been involved in numerous renovations in Church Hill and throughout different areas of the city. It has been so rewarding to be able to preserve parts of our community that in many instances may have been allowed to be abandoned and eventually deteriorate. With the experience of saving parts of our community, I have such a strong interest in helping out in anyway that I possibly can to see to it that Church Hill will continue to grow and reach its maximum potential.

Secretary, Pam Prescott

Pam and her husband Mike fell in love with Church Hill while visiting several years ago and moved to the Hill shortly thereafter. Their home was on the 2007 Holiday House tour. Pam is a member of the CHA and the Church Hill Petanque Club. Pam and her husband are also members of the 2300 Club where they are frequent visitors.



Secretary, Pam Prescott Cont...

They have recently purchased their second home on the Hill and look forward to living here for many years to come. The friendly people and wonderful hometown feel seems to draw people here, and the historical presence in Richmond and Church Hill is truly magical!

Assistant Treasurer, Susan White

I moved to Church Hill just about 2 years ago, but have lived in Richmond for around 30 years. Both my married children and their families live in town, as well. Moving here became my empty nest address, and I love this neighborhood. I work as a nurse practitioner at VCUHS, attend St. John's Church, and often walk around the corner to a neighborhood eatery. I know some of my neighbors through years of working with them, but have met so many more, and love to greet them on the street, in our parks, or at the grocery store.

My name is on the CHA Board Members ballot for Assistant Treasurer. I have dealt with nursing budgets in my nursing administration experience, and if elected, will spend time with the Board Treasurer this year to learn the CHA "ropes." I appreciate your consideration and ask for your vote. Thank you.

Director at Large, Matt Conrad

Born: Lynchburg; Raised: Down the road in Appomattox; College: JMU; Law School: GMU; Employed: LeClair-Ryan. I lived in Richmond before law school and fell in love with the City. My mother was born here and so was her mother, and for so many other reasons it was just natural that I would return to Richmond after finishing school. I did, and like many other folks my age I lived in the fan for a while, and then did my obligatory loft tenancy. Nothing will drive a person to buy their own home faster than living in a loft, but when I began looking for a house, I also wanted to find a place that had the feel of a real community. That is what I have found in my two years of living on the Hill.

I now live in a place where I know my neighbors, where my neighbors are more than sidewalk acquaintances, and where we all share a commitment to growing and strengthening our community to its highest potential. In those ways, my new neighborhood is not unlike my home in Appomattox. Similarly, I love the history of Church Hill, but understand that a community is about people, not they houses they live in or the history that preceded them.

Union Hill is my specific corner of the greater Hill community, and in my two years there I have become active in our civic association. I have organized a successful

progressive dessert during the Christmas season that spanned the breadth of Union Hill; I have organized a community watch with the help of the First Precinct; I have been active in the pursuit of Old and Historic designation for Union Hill; and I will become president of the Union Hill Civic Association this summer. I hope that both Union Hill and Church Hill will be enriched by our greater cooperation, going forward. To that end, and with your support, I look forward to the opportunity to serve on the CHA board, at-large.

Director at Large, Mike McPeak

Resident of Church Hill with an interest in taking full advantage of all the community has to offer and giving back to achieve that goal. To that end, I have assisted with the CHA Christmas Vespers celebration, post current information to the CHA Web Site and am now serving as a Member of the Zoning Committee. I am honored to be nominated as a Director at Large which I see as an opportunity to continue and expand my involvement with Church Hill.

I am a retired public servant with careers in the United Nations and the Regional Development Bank for the Americas and have benefited from their inter-cultural environments. Living abroad with extensive travel in Europe and the Americas, and exposure to foreign languages has been an important part of my life.

I am currently working to complete the renovation of a home to enjoy and share with our large, extended family and friends from Church Hill and all around.

Director at Large, Susan Nolan

Susan Nolan is a relatively new to Church Hill having arrived four years ago from Atlanta, Georgia. A brief visit to Richmond was all I needed to be seduced by the fabulous and profuse historic architecture. One year later we were here. I adore Richmond and think that Church Hill is the BEST community in the city. I am a consultant for two organizations that give me work assignments throughout the country. While that worked for me in Atlanta, once I discovered Richmond, I preferred to be here and not run off to far distant places. I wanted to plant my skills in my own community. I have gotten affiliated with Community College Workforce Alliance as adjunct faculty as my first step toward my goal of staying local. Prior to this time I have resisted taking on formal involvement with CHA as I was often unavailable. As that changes, I want to progressively step into a more active role. I became active in the city in support of the Master Plan and hope to continue to be a vital part in breathing life into the plan. I would be honored to take on the role of Director at Large.

CHA GENERAL MEETING



PROPOSED MINUTES OF THE APRIL 15, 2008 GENERAL MEMBERSHIP MEETING

Submitted by Logan Vetrovec, Secretary

Call to Order: CHA President, Jim Daab, called the meeting to order at 7:10 pm at the St. John's Church Parish Hall and the membership approved the Board minutes as printed in the previous newsletter.

Treasurers Report: Karen Flanders, Treasurer, presented a monthly update on finances.

Committee Reports:

Newsletter- The East District Family Resource Center will begin to provide a monthly update in the newsletter.

Zoning Committee- The Zoning Committee arranged for Tarissa Griffith to report to the membership on Form-Based Codes.

Holiday Festival- A volunteer is needed to Chair the House Tour.

Membership- Bill Pickering reported the CHA has about 220 members so far in 2008. You must be a member to vote at meetings.

Clean and Safe- The Alley Rally will be Saturday, June 14th.

Nominating- The following individuals will be running for CHA Board positions. Vice-President, Beth Sarrett. Assistant Treasurer, Susan White. Secretary, Pam Prescott. Directors at Large (2), Matt Conrad, Mike McPeak, and Susan Nolan. Elections will take place at the May meeting and members can also be nominated prior to the vote.

Announcements- The 2300 Club will offer a \$50 initiation fee to CHA members through April 30th. This will raise to \$100 May 1st through June 30th and will be \$150 beginning July 1st. The initiation fee for non members will be \$300 as of July 1st.

Planter's Society- 10 new trees have been planted in Libby Hill Park.

New Business- Victoria Schnettler from Patrick Henry Charter School is asking members to please contact the School Board in support of this proposed elementary school with a green focus. It will be located on Semmes Ave and is open to all city residents on a first come, first serve basis, moving to a lottery system if needed.

Alan Mead, Interim Rector, St. John's Parish Church, introduced himself and welcomed all to worship Sundays at 8:30 or 11:00AM.

Giant Yard Sale will be June 7th. Eileen Sanders made the motion that the "CHA pay \$109 to cover the advertising cost in the Richmond Times Dispatch" This was ap-

proved by the membership with all in favor.

Larry Ochs, of 3320 East Broad St., asked the CHA to support his appeal to City Council to override the zoning violation from CAR that he must replace the door system and windows installed by the previous owner. Mr. Ochs is willing to replace the door system but not the windows. He withdrew his request for a motion in support and instead circulated a petition for members to sign.

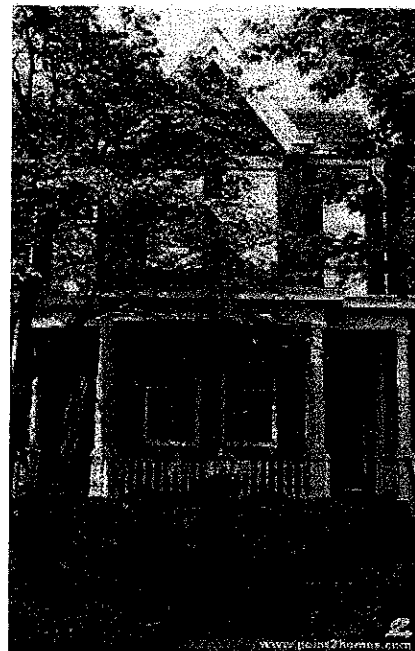
Proposed By-Law Changes: 1(A) "To amend the current CHA By-Laws to read that all members of the board be voting members" and (B) The membership will be asked to ratify all prior decisions made by the board. 2 "To amend the CHA By-Laws so that the term of office will run from January 1st to December 31st and will coincide with the fiscal year." This will be voted on at the next meeting, before elections. The newly elected Board members will serve for 1.5 years with these changes.

Presentations:

Proposed City Zoning Changes- Tarissa Griffith, 646-6308, a planner with the city planning and preservation division, gave a presentation on Form Based Code. Presentations about the advantages of Form Based Code can be found at richmondgov.com. Conventional zoning regulates land use and can be difficult in an urban area. The City is considering moving to Form Based Code which would be developed in a charette form like the Downtown Master Plan.

The meeting was concluded at 8:20pm

Next Meeting: May 20th, St. John's Church Parish Hall



**Church Hill Association
Treasurer's Report**

March 2008 Activity

| | | | |
|--|--|--------------|----------------------|
| Cash/Value as of March 31, 2008 | | | |
| SunTrust - Corporate Checking/Money Market | | \$ 23,751.48 | |
| SunTrust - CD's | | 22,439.94 | |
| Total Cash in Bank/CD | | | \$ 46,191.42 |
| Cash/Value as of February 29, 2008 | | \$ 47,110.03 | |
| Change in Cash | | | \$ (918.61) |
| | | | |
| Cash Receipts | | | |
| Holiday Festival | | 0.00 | |
| Newsletter | | 250.00 | |
| Membership | | 500.00 | |
| Donations/Grants | | 0.00 | |
| Planters Society | | 0.00 | |
| Interest Earned All Accounts | | 68.89 | |
| Total Receipts | | | \$ 818.89 |
| | | | |
| Cash Expenditures | | | |
| Holiday Festival | | 0.00 | |
| Newsletter (March 2008) | | (997.50) | |
| Planters Society | | 0.00 | |
| Operating Expenses | | 0.00 | |
| Meetings/Membership | | 0.00 | |
| New Member Social | | 0.00 | |
| Welcome Packets | | 0.00 | |
| Picnics | | 0.00 | |
| Insurance | | 0.00 | |
| D & O Ins | | (640.00) | |
| Liability Ins audit adj | | (100.00) | |
| Supplies (Stamps/Envelp/Misc) | | 0.00 | |
| Website | | 0.00 | |
| Financial Review/IRS Filings (990) | | 0.00 | |
| Donation and Project Expenses | | 0.00 | |
| Preservation | | 0.00 | |
| Community Relations | | 0.00 | |
| Planters Society | | 0.00 | |
| Total Expenditures | | | \$ (1,737.50) |
| | | | |
| Change in Cash | | | \$ (918.61) |

Respectfully submitted

Karen B. Flanders
Treasurer

CHA MEMBERSHIP



CHURCH HILL ASSOCIATION MEMBERSHIP

If you would like to renew your Church Hill Association membership, come to the next meeting or fill out the form in the Newsletter and mail it to us to avoid the lines. A book, *Living with History*, is included with your membership as well as an expanded number of discounts at local businesses. If you have already joined for 2008-2009 and have not received your book or your new membership cards, we will be at the meetings and you can pick them up there – or call us and we will make arrangements for you to receive them. Don't wait 'till the last minute – start enjoying your membership benefits now! Church Hill phone directories are also available for brand new members at the meetings. Call Lee Ann & Bill Pickering at 643-1025 or e-mail billpicker@msn.com.

Happy Mother's Day

May 11th

JOIN THE CHURCH HILL ASSOCIATION ! JOIN THE CHURCH HILL ASSOCIATION !

CHURCH HILL ASSOCIATION MEMBERSHIP FORM P.O. BOX 8031 RICHMOND, VIRGINIA 23223

Mail form to the CHA address above or bring form to the next General Membership meeting.

Member Name #1 _____

Member Name #2 _____

Street Address _____

City/State/Zip _____

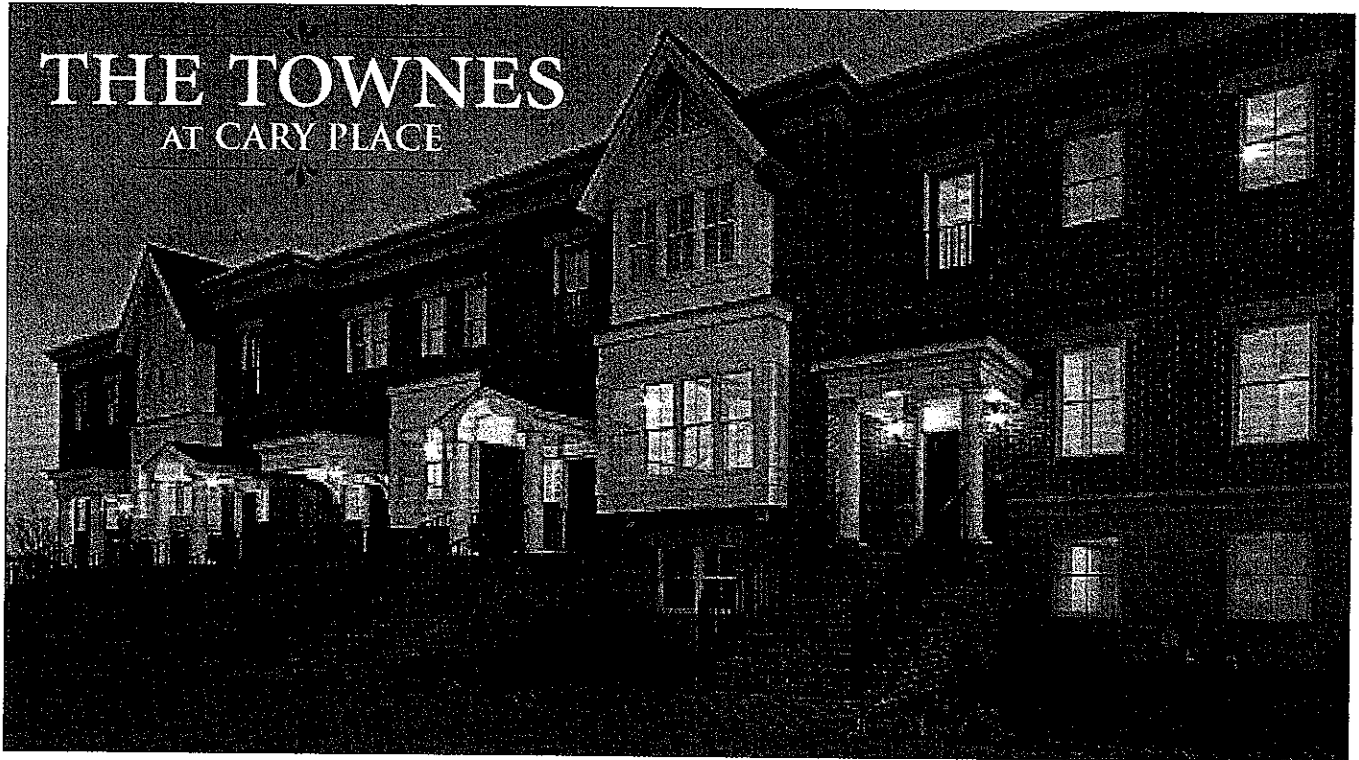
Phone _____

E-Mail _____

Cash _____ Check _____ (Make payable to CHA) \$20 per person _____ Memberships = \$ _____

GATED TOWNHOME LIVING IN THE FAN

THE TOWNES AT CARY PLACE



- *Private interior park*
- *Gated entry with private parking*
 - *2 & 3 bedroom plans*
 - *Rear-entry 1&2 car garages*
 - *10-foot ceilings*
- *Optional elevators & finished ground level game rooms*

visit today at

1701 West Cary St. | 355-5050 | From the \$400s
thetownesatcaryplace.com
or visit Legacy Properties (1915 West Cary St., 12-5 Daily)



Nelson Curtis
241-0609



Cami Graham
240-5284



Jeff Wells
908-7252

StyleCraft
HOMES

REPRESENTED BY LEGACY PROPERTIES, DEVELOPED BY EAST WEST PARTNERS



David Cooley, *president*

RBV a

Contracting | Development | Fine Carpentry
in Church Hill since 1984

804.649.2162

Restoration Builders of Virginia, Inc.

Crumbling cornices corrected

Period porches preserved

Daring, even daunting development

Leaning lumber levered

Rich racy restorations

Fine finishes finessed

Tiny troubles tuned.