

OAKWOOD HEIGHTS

3618 E. Broad Street / 3611 E. Marshall Street
 Richmond, Virginia

Owner:

Fulton Hill Properties
 1000 Carlisle Avenue
 Richmond, VA 23231

Architect:

Hays+Ewing Design Studio
 609 East Market Street, #203
 Charlottesville, VA 22902

Landscape Architect:

Nelson Byrd Woltz Landscape Architects
 408 Park Street
 Charlottesville, VA 22902

Site Plan

Scale: 1/32" = 1'-0"

August 26, 2008



OAKWOOD HEIGHTS

3618 E. Broad Street / 3611 E. Marshall Street
 Richmond, Virginia

Owner:

Fulton Hill Properties
 1000 Carlisle Avenue
 Richmond, VA 23231

Architect:

Hays+Ewing Design Studio
 609 East Market Street, #203
 Charlottesville, VA 22902

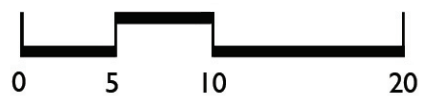
Landscape Architect:

Nelson Byrd Woltz Landscape Architects
 408 Park Street
 Charlottesville, VA 22902

East Broad St Elevation

Scale: 1"=10'-0"

August 26, 2008



OAKWOOD HEIGHTS

3618 E. Broad Street / 3611 E. Marshall Street
 Richmond, Virginia

Owner:

Fulton Hill Properties
 1000 Carlisle Avenue
 Richmond, VA 23231

Architect:

Hays+Ewing Design Studio
 609 East Market Street, #203
 Charlottesville, VA 22902

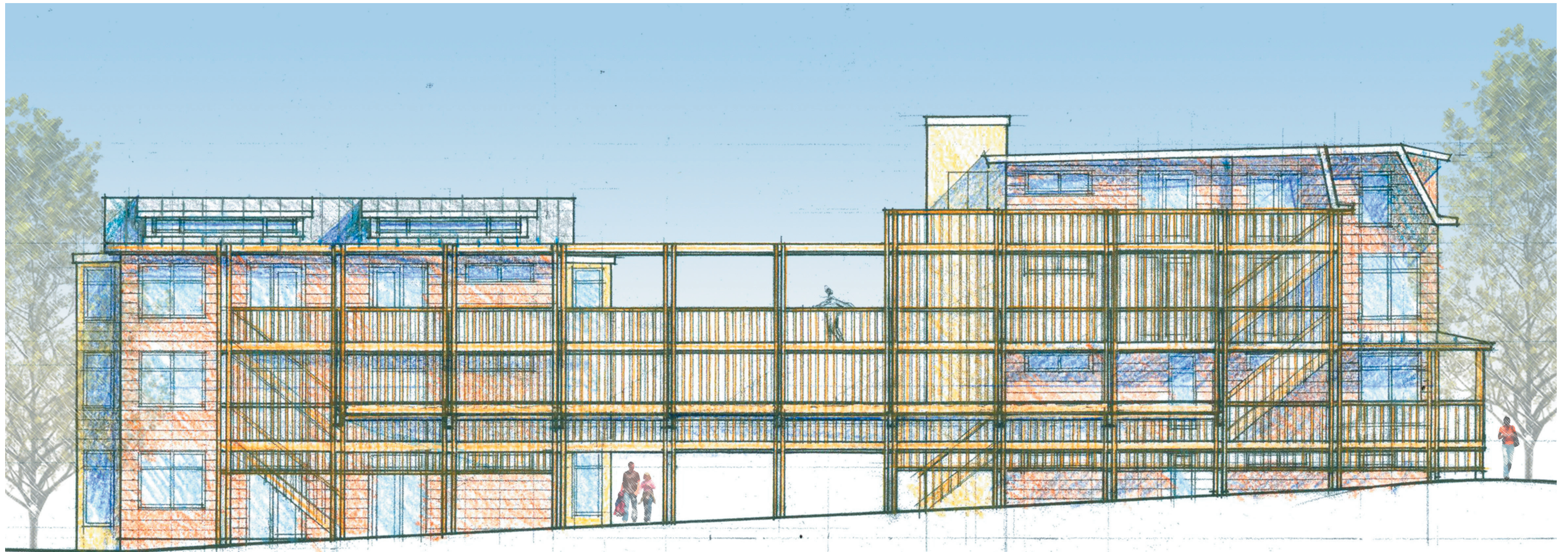
Landscape Architect:

Nelson Byrd Voltz Landscape Architects
 408 Park Street
 Charlottesville, VA 22902

West Elevation I

Scale: 1"=10'-0"

August 26, 2008



BUILDING BLOCK 1B

BUILDING BLOCK 1A



OAKWOOD HEIGHTS

3618 E. Broad Street / 3611 E. Marshall Street
Richmond, Virginia

Owner:

Fulton Hill Properties
1000 Carlisle Avenue
Richmond, VA 23231

Architect:

Hays+Ewing Design Studio
609 East Market Street, #203
Charlottesville, VA 22902

Landscape Architect:

Nelson Byrd Woltz Landscape Architects
408 Park Street
Charlottesville, VA 22902

West Elevation 2

Scale: 1" = 10'-0"

August 26, 2008



OAKWOOD HEIGHTS

3618 E. Broad Street / 3611 E. Marshall Street
 Richmond, Virginia

Owner:

Fulton Hill Properties
 1000 Carlisle Avenue
 Richmond, VA 23231

Architect:

Hays+Ewing Design Studio
 609 East Market Street, #203
 Charlottesville, VA 22902

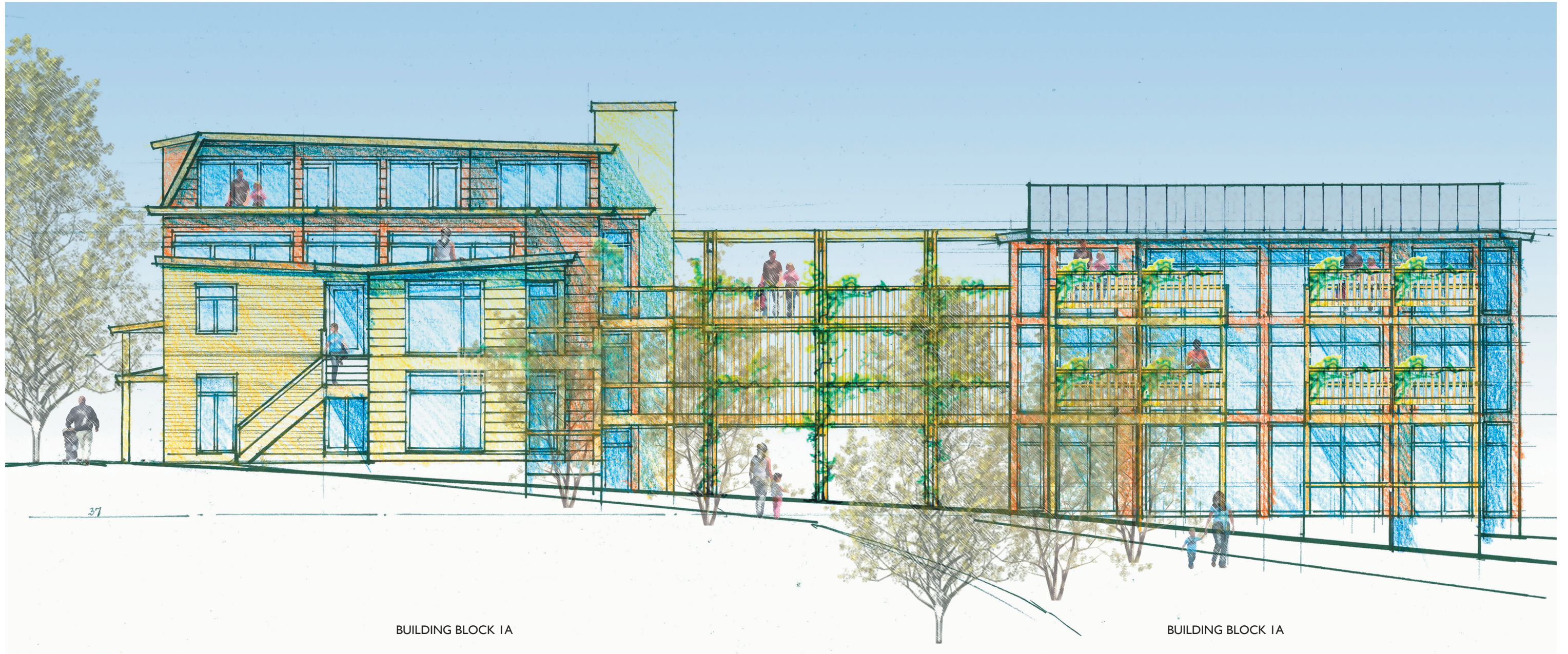
Landscape Architect:

Nelson Byrd Woltz Landscape Architects
 408 Park Street
 Charlottesville, VA 22902

East Marshall St Elevation

Scale: 1"=10'-0"

August 26, 2008



OAKWOOD HEIGHTS

3618 E. Broad Street / 3611 E. Marshall Street
Richmond, Virginia

Owner:

Fulton Hill Properties
1000 Carlisle Avenue
Richmond, VA 23231

Architect:

Hays+Ewing Design Studio
609 East Market Street, #203
Charlottesville, VA 22902

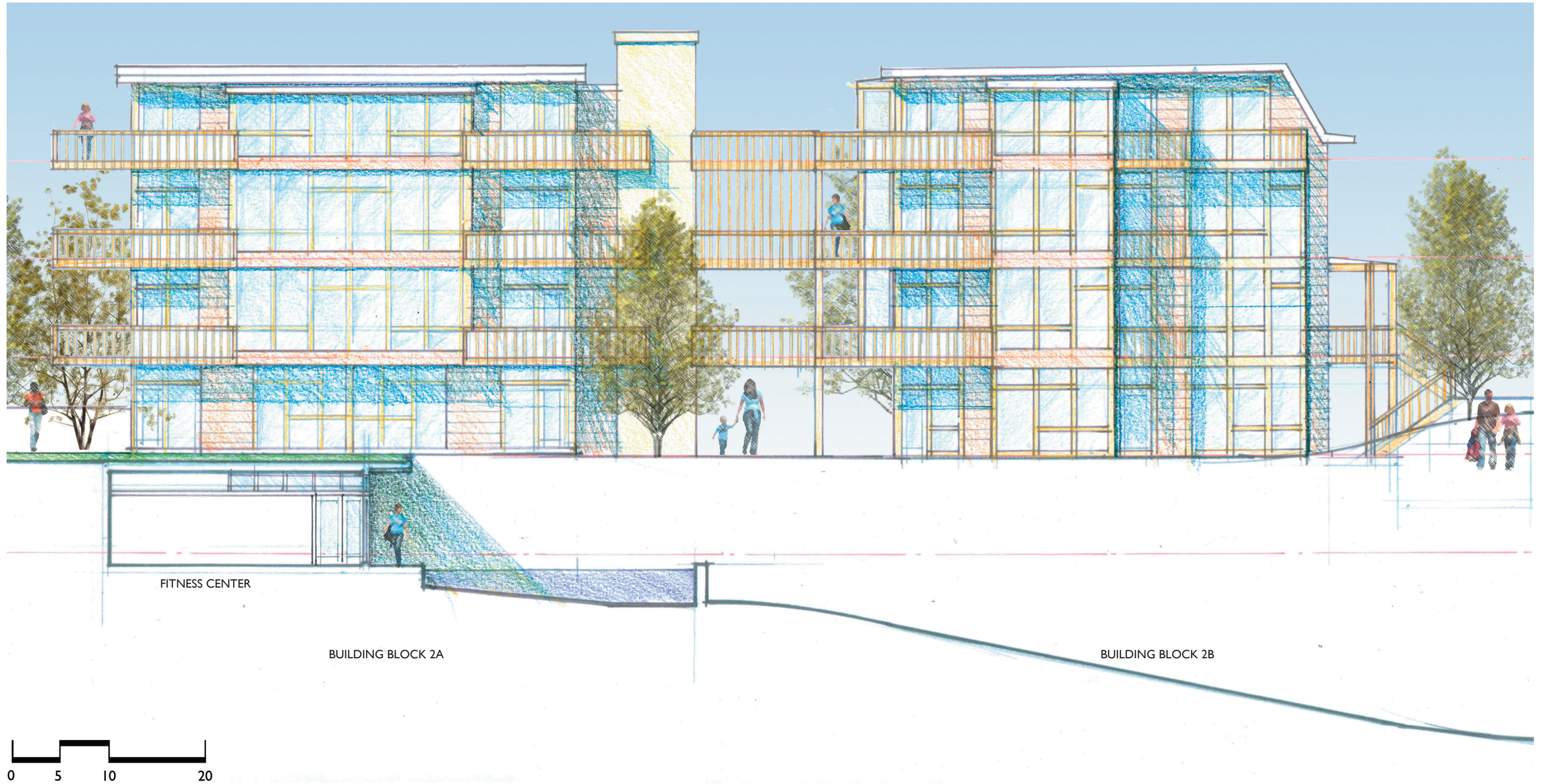
Landscape Architect:

Nelson Byrd Woltz Landscape Architects
408 Park Street
Charlottesville, VA 22902

East Elevation I

Scale: 1"=10'-0"

August 26, 2008



OAKWOOD HEIGHTS

3618 E. Broad Street / 3611 E. Marshall Street
Richmond, Virginia

Owner:

Fulton Hill Properties
1000 Carlisle Avenue
Richmond, VA 23231

Architect:

Hays+Ewing Design Studio
609 East Market Street, #203
Charlottesville, VA 22902

Landscape Architect:

Nelson Byrd Woltz Landscape Architects
408 Park Street
Charlottesville, VA 22902

East Elevation 2

Scale: 1" = 10'-0"

August 26, 2008



OAKWOOD HEIGHTS

3618 E. Broad Street / 3611 E. Marshall Street
 Richmond, Virginia

Owner:

Fulton Hill Properties
 1000 Carlisle Avenue
 Richmond, VA 23231

Architect:

Hays+Ewing Design Studio
 609 East Market Street, #203
 Charlottesville, VA 22902

Landscape Architect:

Nelson Byrd Woltz Landscape Architects
 408 Park Street
 Charlottesville, VA 22902

South Alley Elevation

Scale: 1" = 10'-0"

August 26, 2008



OAKWOOD HEIGHTS

3618 E. Broad Street / 3611 E. Marshall Street
Richmond, Virginia

Owner:

Fulton Hill Properties
1000 Carlisle Avenue
Richmond, VA 23231

Architect:

Hays+Ewing Design Studio
609 East Market Street, #203
Charlottesville, VA 22902

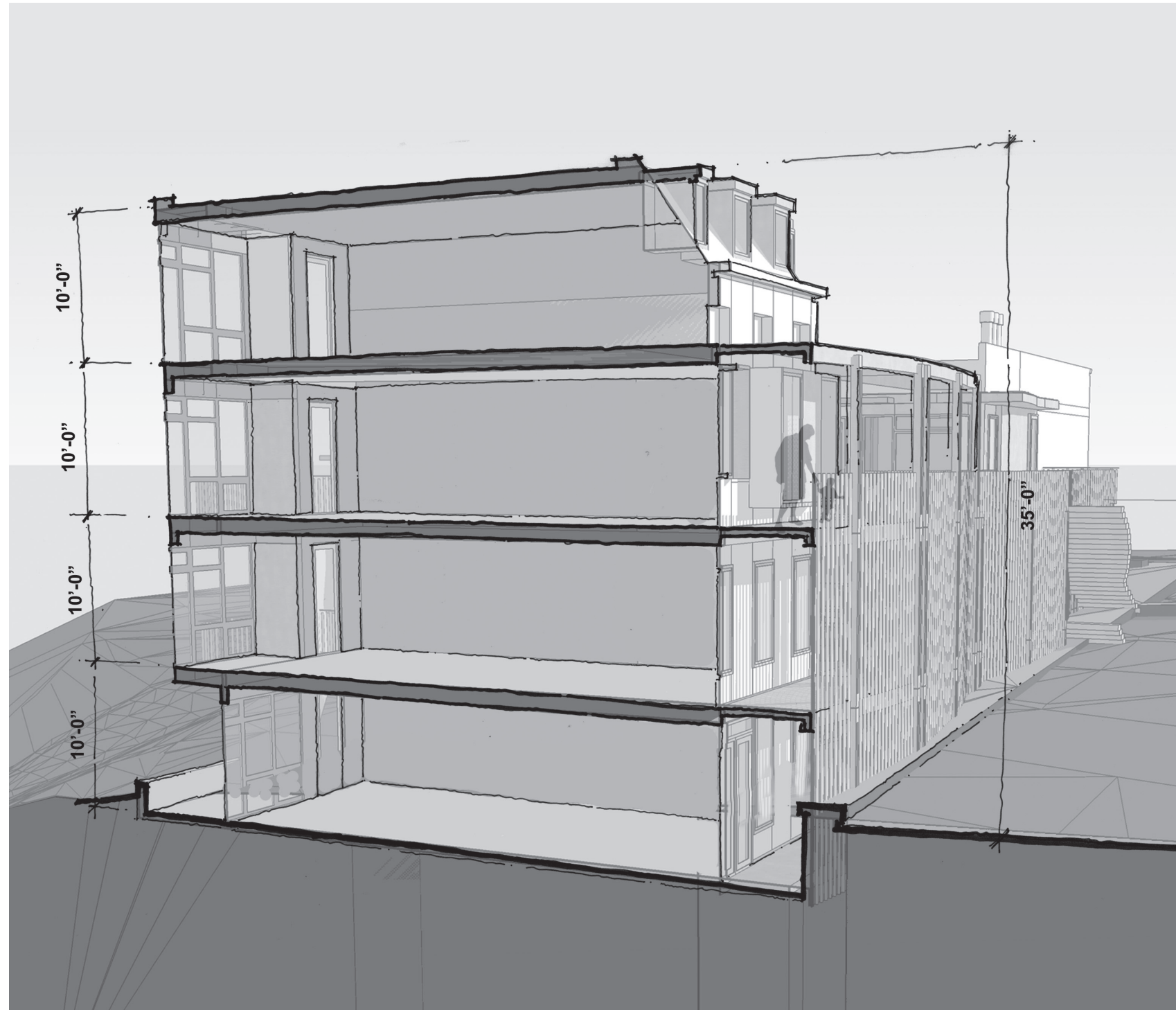
Landscape Architect:

Nelson Byrd Woltz Landscape Architects
408 Park Street
Charlottesville, VA 22902

View from East Broad St

Scale: NA

August 26, 2008



OAKWOOD HEIGHTS

3618 E. Broad Street / 3611 E. Marshall Street
Richmond, Virginia

Owner:

Fulton Hill Properties
1000 Carlisle Avenue
Richmond, VA 23231

Architect:

Hays+Ewing Design Studio
609 East Market Street, #203
Charlottesville, VA 22902

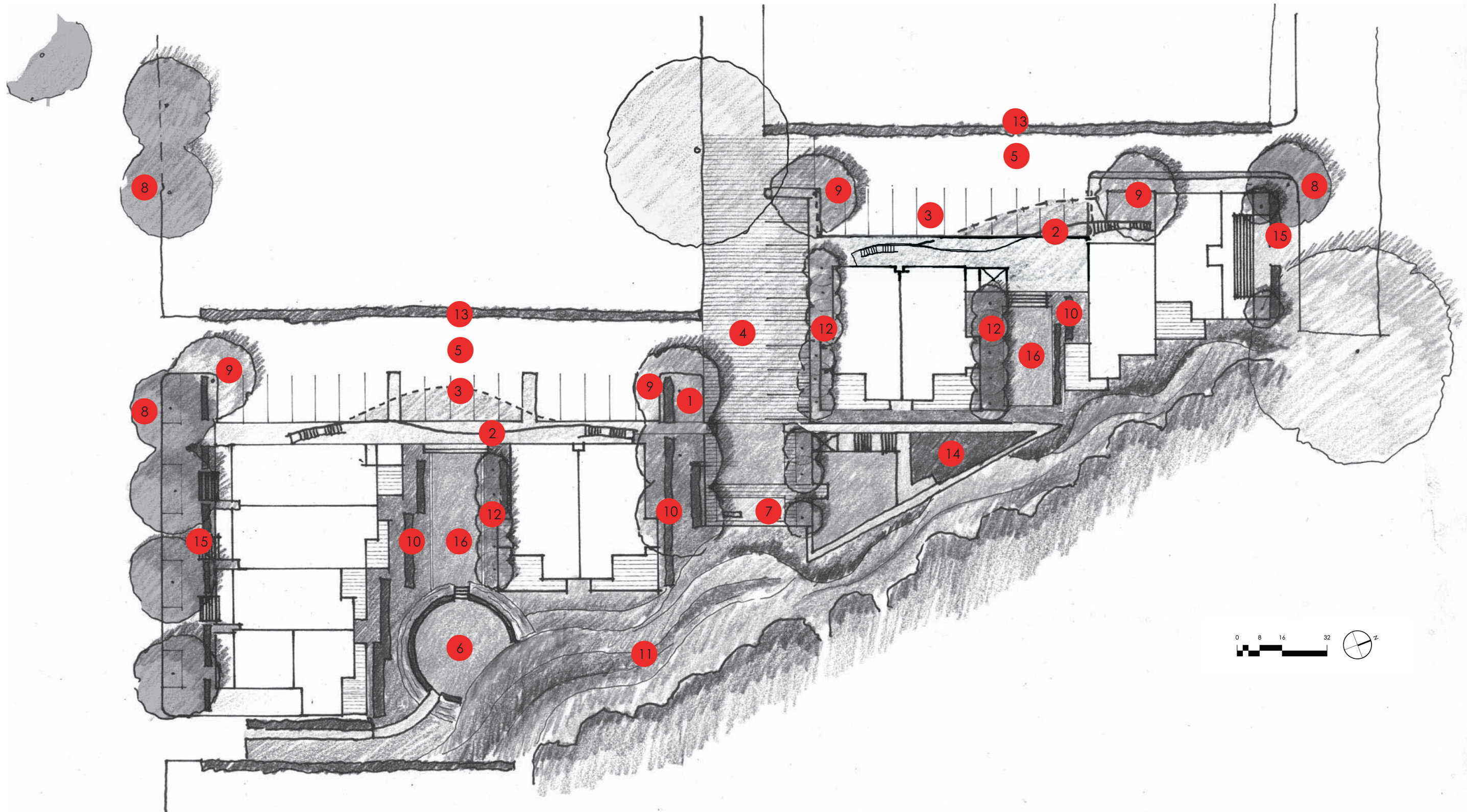
Landscape Architect:

Nelson Byrd Woltz Landscape Architects
408 Park Street
Charlottesville, VA 22902

Typical Unit Section

Scale: NA

August 26, 2008



OAKWOOD HEIGHTS

3618 E. Broad Street / 3611 E. Marshall Street
 Richmond, Virginia

Owner:

Fulton Hill Properties
 1000 Carlisle Avenue
 Richmond, VA 23231

Architect:

Hays+Ewing Design Studio
 609 East Market Street, #203
 Charlottesville, VA 22902

Landscape Architect:

Nelson Byrd Woltz Landscape Architects
 408 Park Street
 Charlottesville, VA 22902

Material Key Plan

Scale: 1/32"=1'-0"

August 26, 2008





1 Bike Racks



2 Vines: Gelsemium sempervirens



Vines: Bignonia Capreolata



3 Porous Paving: Parking Spaces



4 Porous Paving: Pavers



5 Porous Paving Concrete

OAKWOOD HEIGHTS

3618 E. Broad Street / 3611 E. Marshall Street
Richmond, Virginia

Owner:

Fulton Hill Properties
1000 Carlisle Avenue
Richmond, VA 23231

Architect:

Hays+Ewing Design Studio
609 East Market Street, #203
Charlottesville, VA 22902

Landscape Architect:

Nelson Byrd Woltz Landscape Architects
408 Park Street
Charlottesville, VA 22902

Material Illustrations

August 26, 2008



6 Circular Rain Garden with Lawn at Center



8 Elm Trees Typical on Street



9 Red Oak Typical at Parking Court and Driveways



7 Benches



10 Evergreen Low Hedge Wax Myrtle or Inkberry Holly

OAKWOOD HEIGHTS

3618 E. Broad Street / 3611 E. Marshall Street
Richmond, Virginia

Owner:

Fulton Hill Properties
1000 Carlisle Avenue
Richmond, VA 23231

Architect:

Hays+Ewing Design Studio
609 East Market Street, #203
Charlottesville, VA 22902

Landscape Architect:

Nelson Byrd Voltz Landscape Architects
408 Park Street
Charlottesville, VA 22902

Material Illustrations

August 26, 2008



11 Hillside Planting:
Perennials and
Switchgrass



11 Hillside Planting:
Shrubs
Sweetpire



11 Hillside Planting:
Ground cover
Fragrant Sumac



12 Sweetbay Magnolia
Typical in Residential
Gardens



11 Hillside Planting:
Shrubs
Red-twig Dogwood



13 Magnolia grandiflora
"Little Gem" Hedge

OAKWOOD HEIGHTS

3618 E. Broad Street / 3611 E. Marshall Street
Richmond, Virginia

Owner:

Fulton Hill Properties
1000 Carlisle Avenue
Richmond, VA 23231

Architect:

Hays+Ewing Design Studio
609 East Market Street, #203
Charlottesville, VA 22902

Landscape Architect:

Nelson Byrd Voltz Landscape Architects
408 Park Street
Charlottesville, VA 22902

Material Illustrations

August 26, 2008



14 Pool with Tile



16 Play Lawn



15 Curb and Hedge



OAKWOOD HEIGHTS

3618 E. Broad Street / 3611 E. Marshall Street
Richmond, Virginia

Owner:

Fulton Hill Properties
1000 Carlisle Avenue
Richmond, VA 23231

Architect:

Hays+Ewing Design Studio
609 East Market Street, #203
Charlottesville, VA 22902

Landscape Architect:

Nelson Byrd Voltz Landscape Architects
408 Park Street
Charlottesville, VA 22902

Material Illustrations

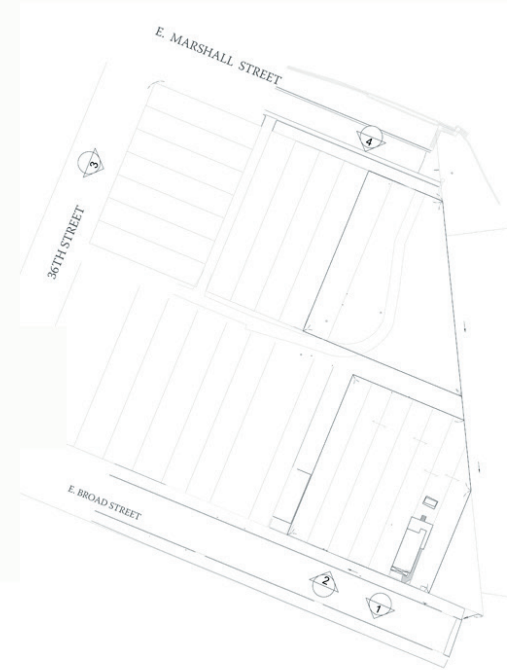
August 26, 2008



1. BROAD STREET ELEVATION LOOKING SOUTH



2. BROAD STREET ELEVATION LOOKING NORTH



3. 36TH STREET ELEVATION LOOKING EAST



4. E. MARSHALL STREET ELEVATION LOOKING SOUTH

OAKWOOD HEIGHTS

3618 E. Broad Street / 3611 E. Marshall Street
Richmond, Virginia

Owner:

Fulton Hill Properties
1000 Carlisle Avenue
Richmond, VA 23231

Architect:

Hays+Ewing Design Studio
609 East Market Street, #203
Charlottesville, VA 22902

Landscape Architect:

Nelson Byrd Voltz Landscape Architects
408 Park Street
Charlottesville, VA 22902

Neighborhood Street Elevations

Scale: NA

August 26, 2008