

Mixed Use

600 North 28th Street



Owner:

Josh Bilder

Architect:

Johannas Design Group

6.25.09



**Original mixed use
building and garage
destroyed by fire**





600 thru 604 N. 28th



500 block N.
28th



Corner of 27th
and E. Clay

**The site and
relevant
photographs**



2700 block of E. Leigh



500 block of 28th looking east

**Adjacent
blocks**



2800 block E. Leigh looking east



**NE corner of 28th and
E. Leigh**



**Looking east across 28th
Street from the site**

**Commercial building at
29th and E. Leigh**



Mixed Use Properties in Church Hill North Historic District



**E. Marshall at
27th looking west**

23rd and E. Marshall

**Assemblage of
buildings on a site**





E. Marshall at 27th looking west



27th and M looking west

Existing compositions

33rd at E. Marshall looking north



**Scale and
relationships to
corners and
adjacent buildings**



27th and M

E. Clay and 27th

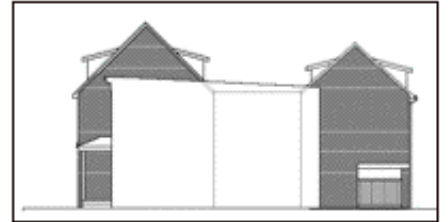


510 N. 29th one block from site





site



28th St.

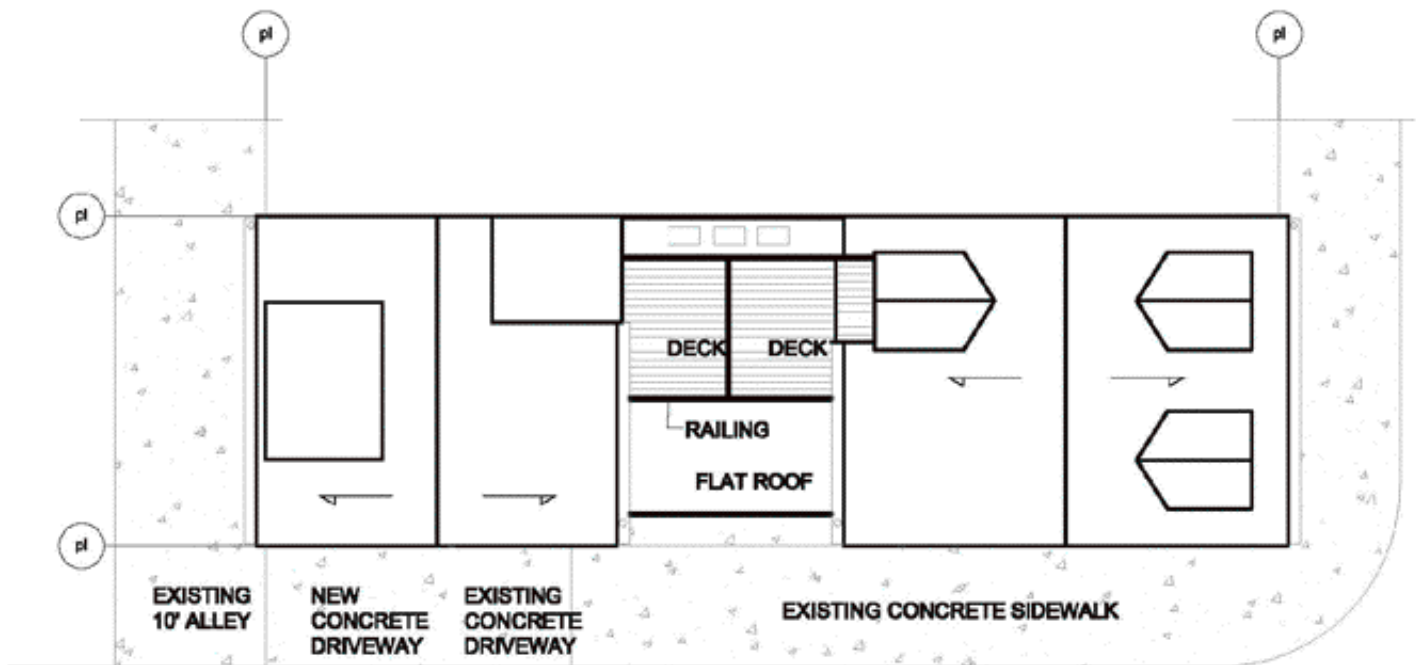
**2700
block of
E. Leigh**



site

Mixed Use

600 North 28th Street



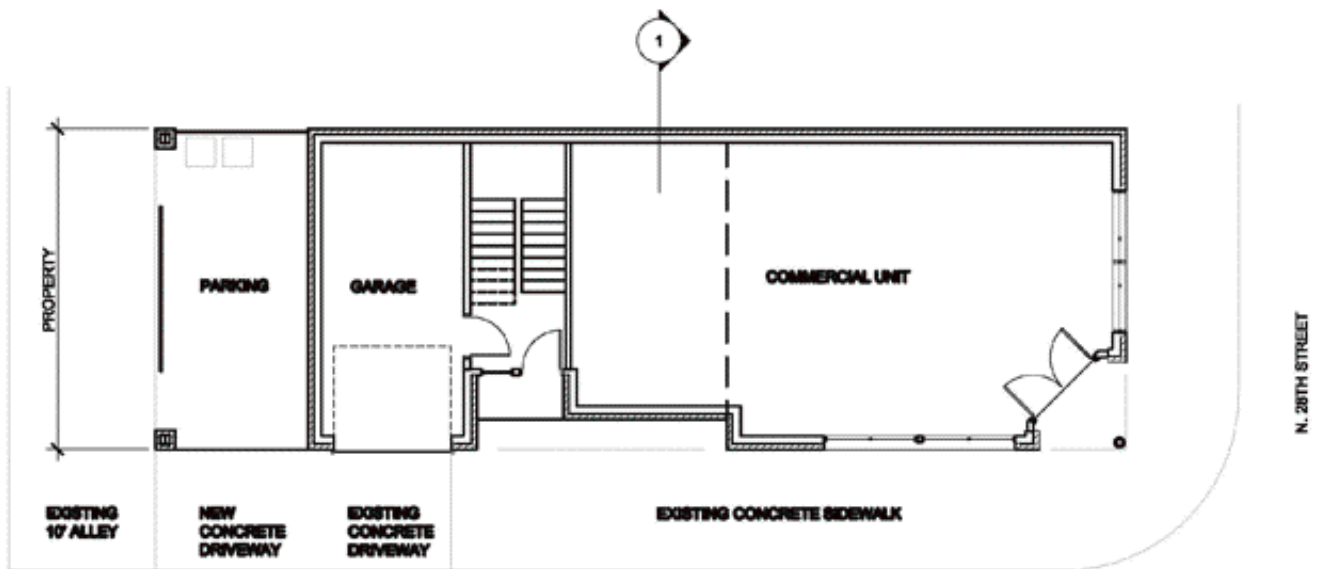
SITE/ROOF

3/32" = 1'-0"



Mixed Use

600 North 28th Street



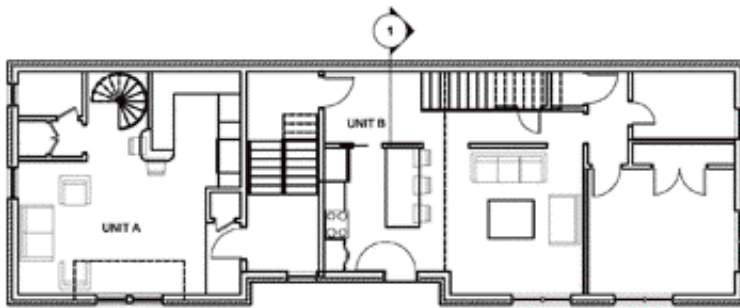
EAST LEIGH STREET

FIRST FLOOR PLAN
1/8" = 1'-0"

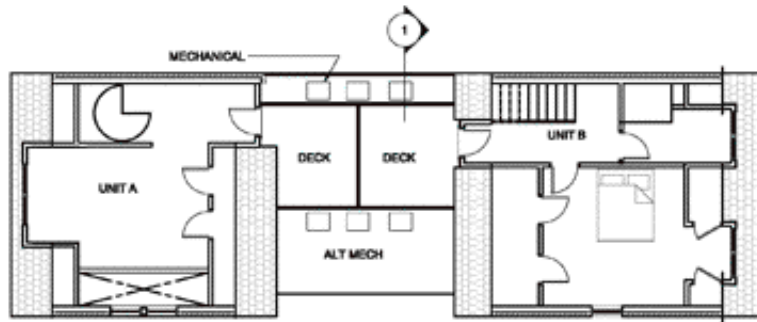


Mixed Use

600 North 28th Street



SECOND FLOOR PLAN
1/8" = 1'-0"



THIRD FLOOR PLAN
1/8" = 1'-0"



Mixed Use

600 North 28th Street



A EAST LEIGH STREET ELEVATION
1/8" = 1'-0"

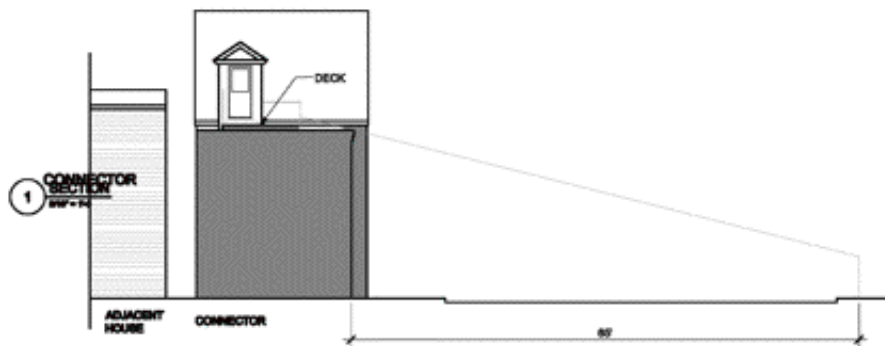
Mixed Use
600 North 28th Street



A **EAST LEIGH STREET ELEVATION**
1/8" = 1'-0"

Mixed Use

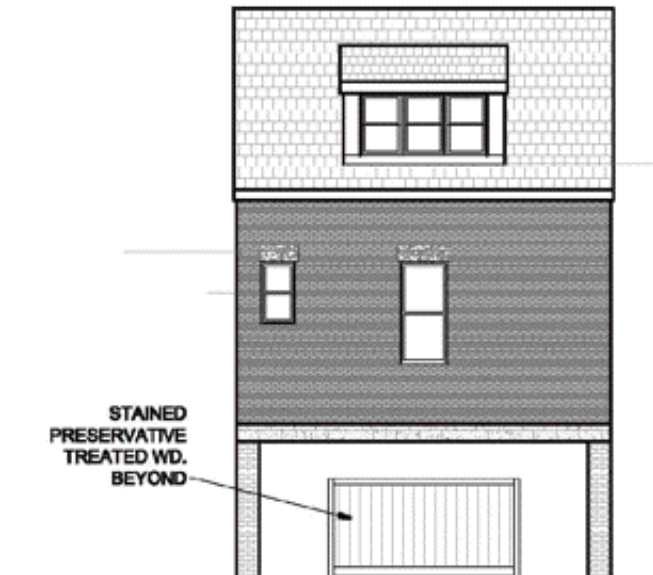
600 North 28th Street



Mixed Use
600 North 28th Street



2 NORTH 28TH ST ELEVATION
SWP - 1-10'

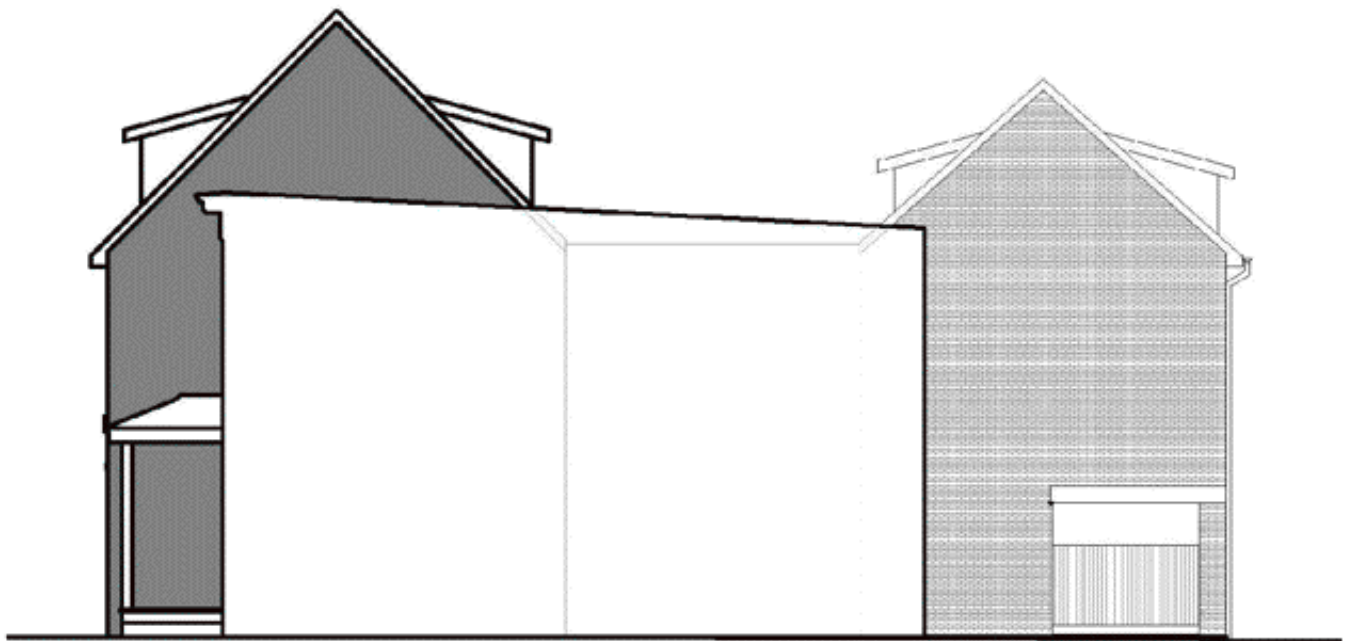


3 ALLEY ELEVATION
SWP - 1-10'

Mixed Use
600 North 28th Street



Mixed Use
600 North 28th Street



4 **ELEVATION LOOKING TOWARDS E. LEIGH ST. FROM NEIGHBOR'S HOUSE**
SW - 1/2