

Residential Infill

EXISTING R-53
VACANT SITES



TABLE OF CONTENTS

- 2 context
- 3 massing
- 4 existing site plan
- 5 proposed site plan
- 6 plan layouts
- 7 front elevation
- 8 rear elevation
- 9 side elevations
- 10 design
- 11 design
- 12 design
- 13 design

OWNER
Related Companies, Ilc

ARCHITECT
Johannas Design Group
1901 W. Cary St. Richmond Virginia 23220

PROJECT
Residential Infill
504-510 N. 28th Street Richmond Virginia 23223

10.30.2009

REVISIONS

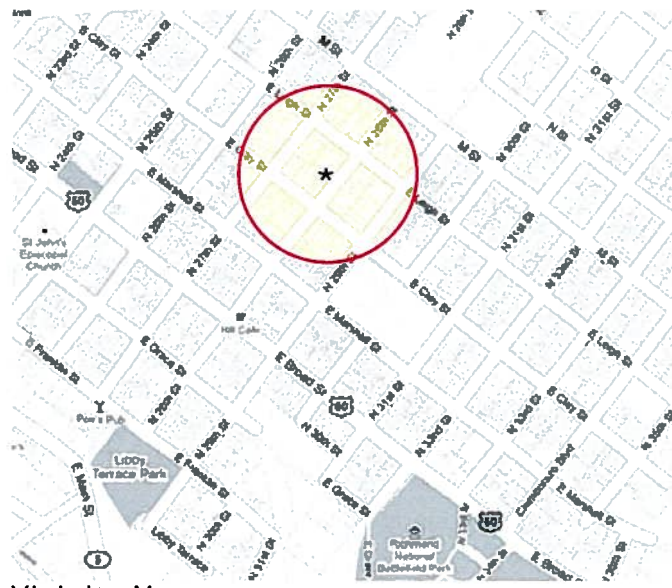
street scape & map



1. West Side of North 28th Street



2. East Side of North 28th Street



Vicinity Map

OWNER
Related Companies, llc

ARCHITECT
Johannas Design Group
1901 W. Cary St. Richmond Virginia 23220

PROJECT
Residential Infill
504-510 N. 28th Street Richmond Virginia 23223

10.30.2009

REVISIONS



1. Across the street at corner of Marshall Street



2. Across the street about mid block

massing
in the
vicinity



3. Marshall St. - abuts in the back



4. 27th and M St.

OWNER
Related Companies, llc

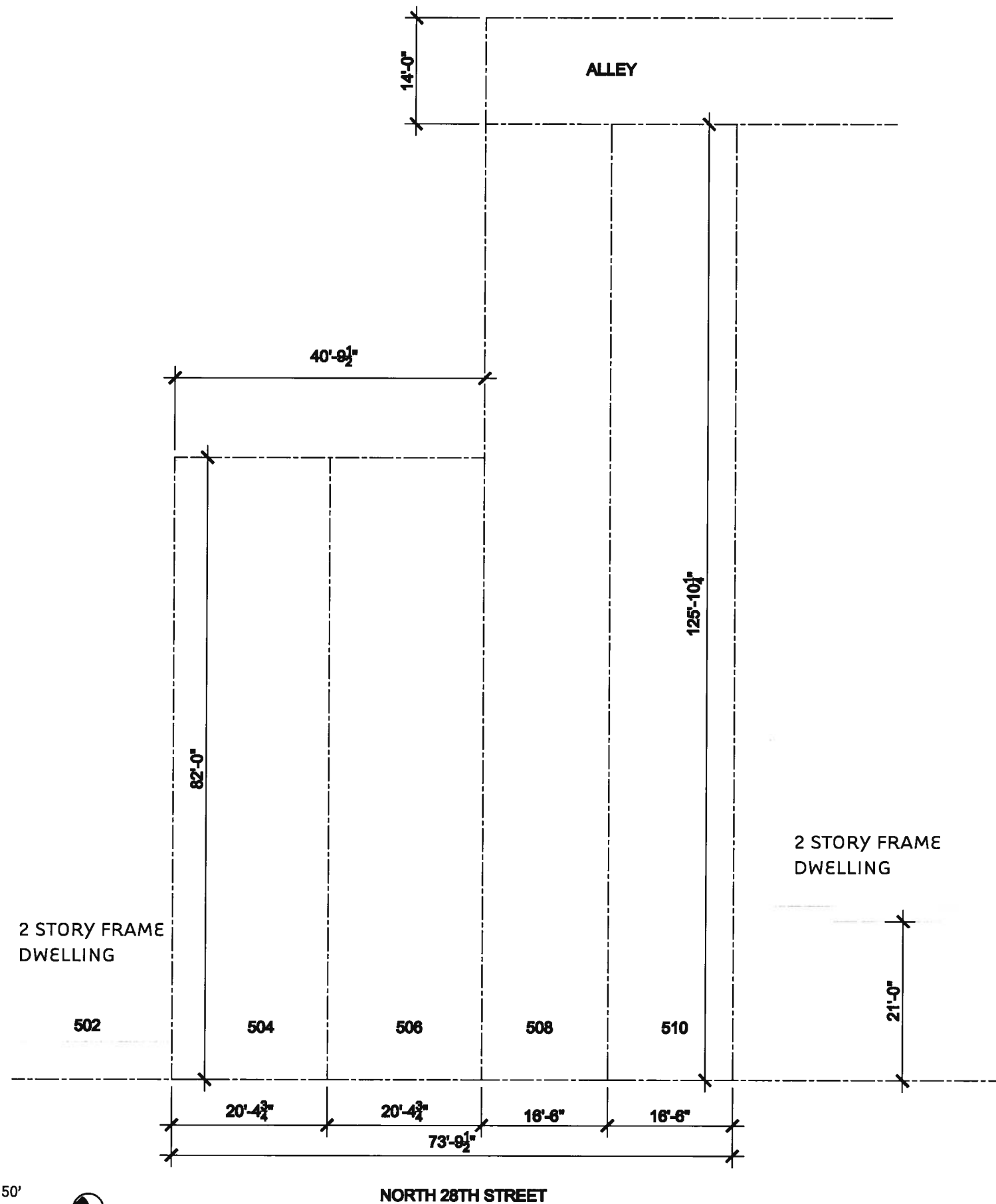
ARCHITECT
Johannas Design Group
1901 W. Cary St. Richmond Virginia 23220

PROJECT
Residential Infill
504-510 N. 28th Street Richmond Virginia 23223

10.30.2009

REVISIONS

Existing Site Plan



This information in part from a survey performed by McKnight & Associates on April 6, 2009.

0' 5' 20'

50'



ARCHITECT

Johannas Design Group
1901 W. Cary St. Richmond Virginia 23220

PROJECT

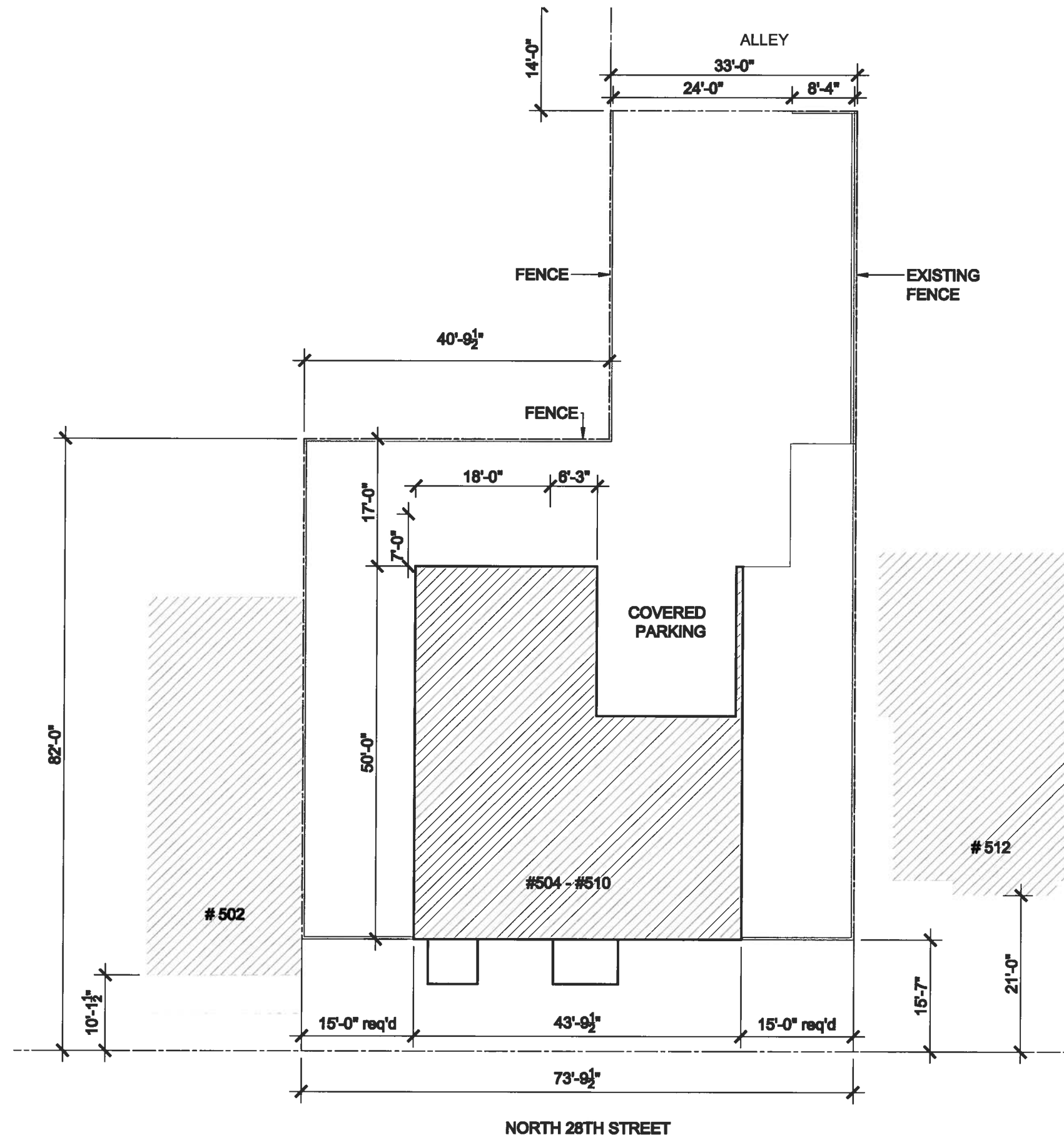
Residential Infill
504-510 N. 28th Street Richmond Virginia 23223

10.30.2009

REVISIONS

OWNER
Related Companies, llc

Proposed Site Plan



0' 5' 20' 50'

OWNER
Related Companies, llc

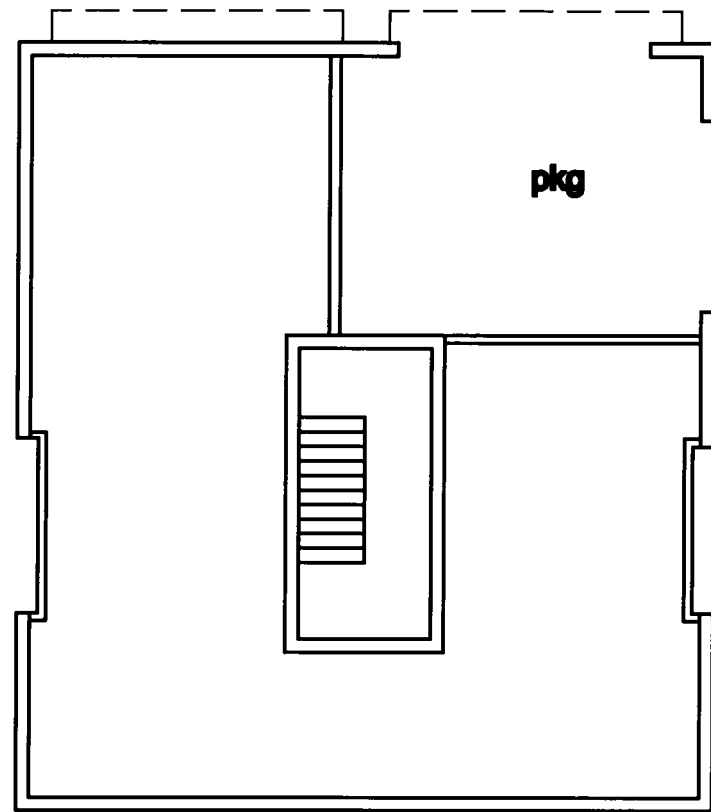
ARCHITECT
Johannas Design Group
1901 W. Cary St. Richmond Virginia 23220

PROJECT
Residential Infill
504-510 N. 28th Street Richmond Virginia 23223

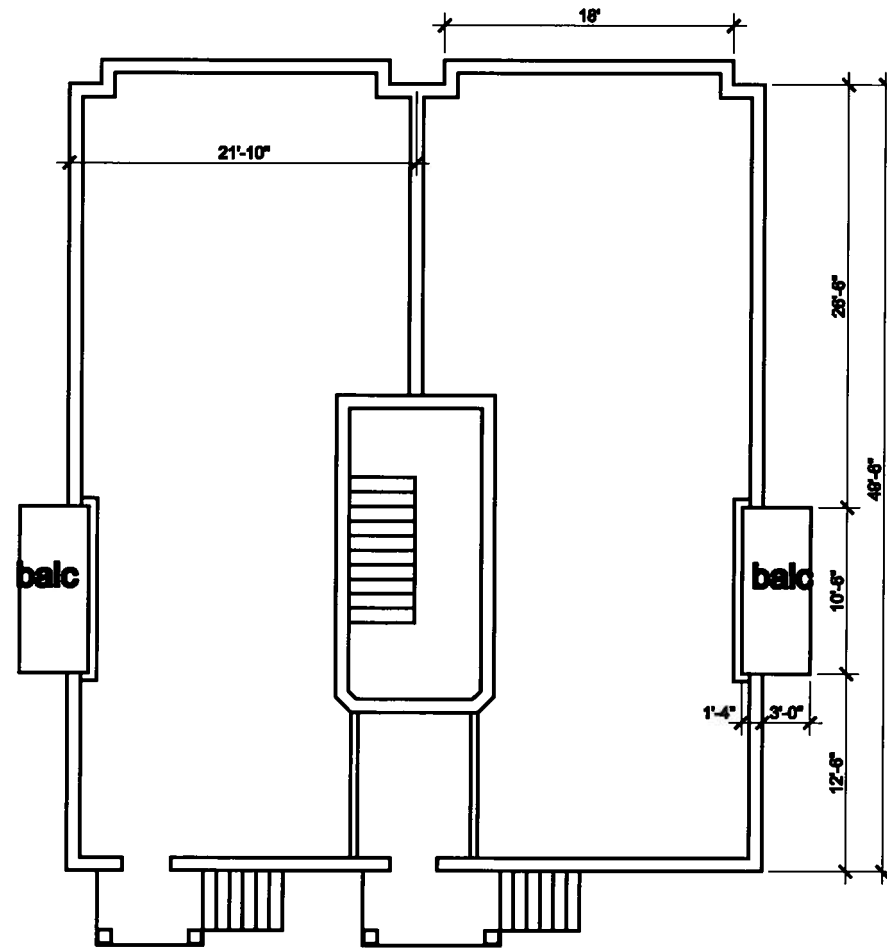
10.30.2009

REVISIONS

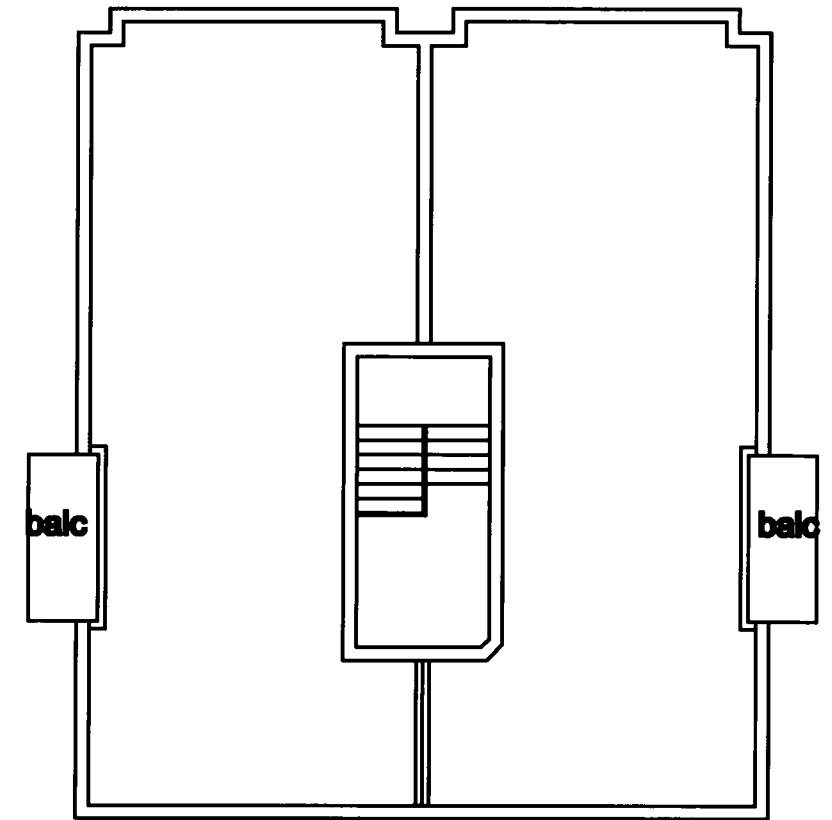
plan layouts



ground

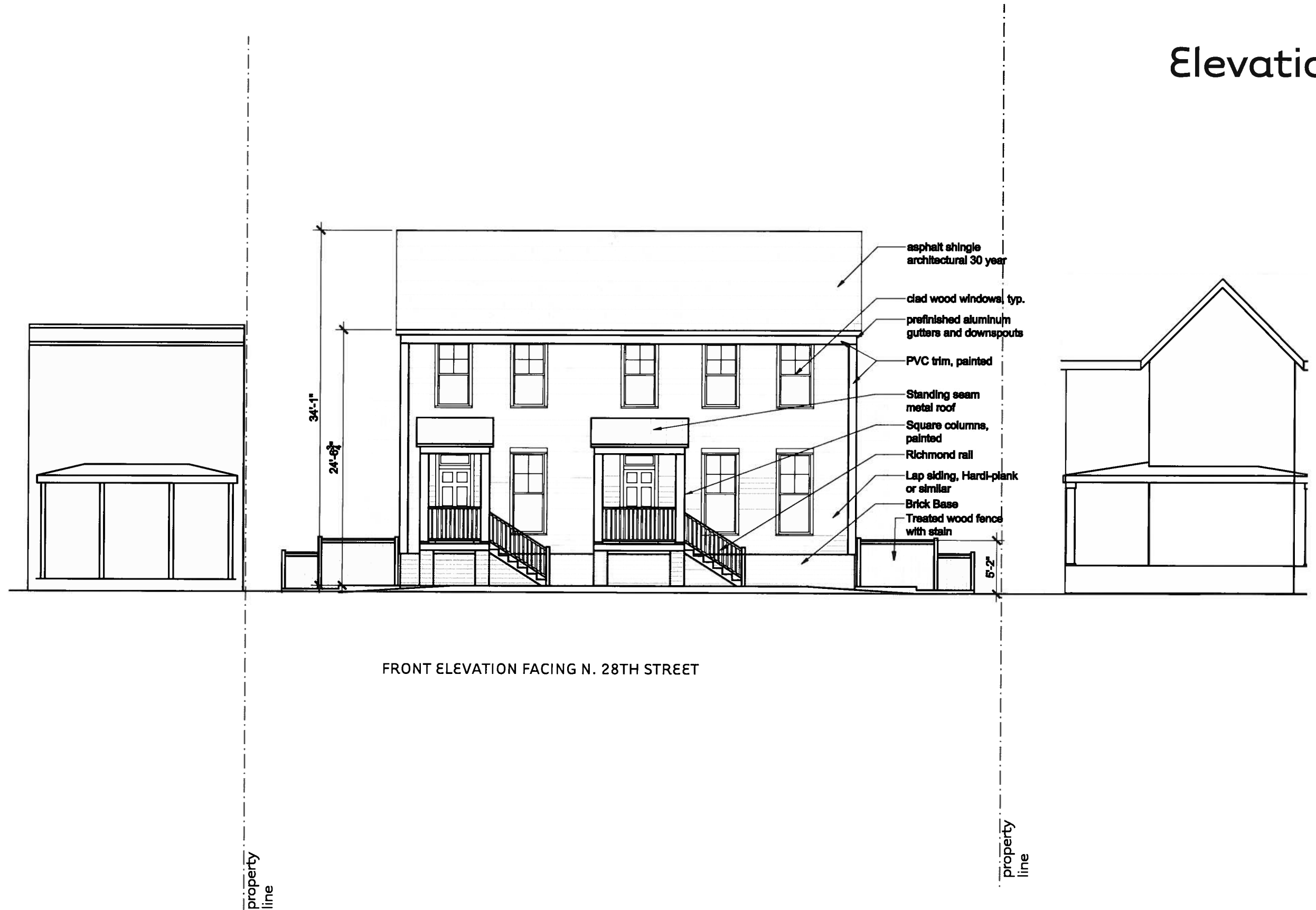


first



second

Elevations



FRONT ELEVATION FACING N. 28TH STREET

OWNER
Related Companies, llc

ARCHITECT
Johannas Design Group
1901 W. Cary St. Richmond Virginia 23220

PROJECT
Residential Infill
504-510 N. 28th Street Richmond Virginia 23223

10.30.2009

REVISIONS

Elevations



REAR ELEVATION FACING ALLEY

OWNER
Related Companies, llc

ARCHITECT
Johannas Design Group
1901 W. Cary St. Richmond Virginia 23220

PROJECT
Residential Infill
504-510 N. 28th Street Richmond Virginia 23223

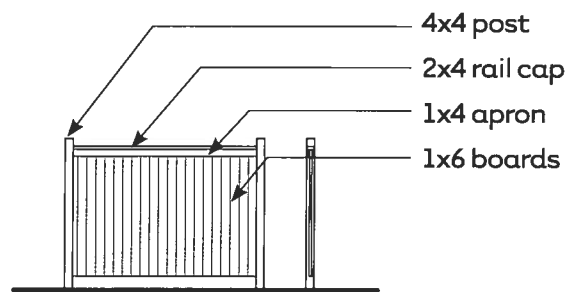
10.30.2009

REVISIONS

Elevations



NORTH ELEVATION



FENCE DETAIL
preservative treated wood



SOUTH ELEVATION

OWNER
Related Companies, llc

ARCHITECT
Johannas Design Group
1901 W. Cary St. Richmond Virginia 23220

PROJECT
Residential Infill
504-510 N. 28th Street Richmond Virginia 23223

10.30.2009

REVISIONS



- Design
- porches
 - fenestration
 - roof line
 - mass



OWNER
Related Companies, llc

ARCHITECT
Johannas Design Group
1901 W. Cary St. Richmond Virginia 23220

PROJECT
Residential Infill
504-510 N. 28th Street Richmond Virginia 23223

10.30.2009

REVISIONS



- Design
- lap siding
 - metal roof
 - ptd trim
 - pickets



OWNER
Related Companies, llc

ARCHITECT
Johannas Design Group
1901 W. Cary St. Richmond Virginia 23220

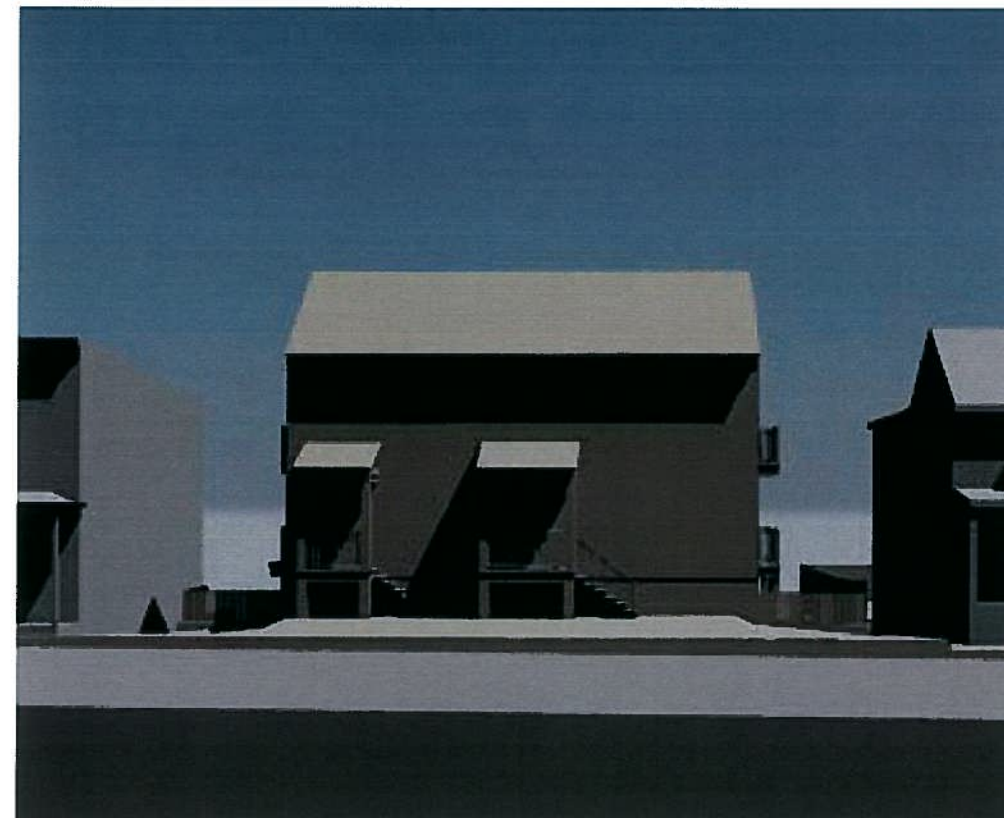
PROJECT
Residential Infill
504-510 N. 28th Street Richmond Virginia 23223

10.30.2009

REVISIONS



Design
- street
views



OWNER
Related Companies, llc

ARCHITECT
Johannas Design Group
1901 W. Cary St. Richmond Virginia 23220

PROJECT
Residential Infill
504-510 N. 28th Street Richmond Virginia 23223

10.30.2009

REVISIONS



Design
- alley
directly
behind



OWNER
Related Companies, llc

ARCHITECT
Johannas Design Group
1901 W. Cary St. Richmond Virginia 23220

PROJECT
Residential Infill
504-510 N. 28th Street Richmond Virginia 23223

10.30.2009

REVISIONS