

The greater Church Hill area is a compact, walkable collection of neighborhoods with architecture dating from the early 1800s. Make a day of it and enjoy great food and drink, amazing views of the Richmond skyline, relaxing public spaces, a living sense of American history, and easy access to the James River, Capital Trail, and downtown.

Alamo BBQ
Union Market
Metzger Bar and Butchery
Jus' Fish
Sub Rosa Bakery
The Roosevelt
Patrick Henry Pub
The Dog and Pig Show
Proper Pie
Captain Buzzy's Beanery
Dutch & Co.
WPA Baker
Hill Cafe
Poe's Pub
Millie's Diner
23rd & Main Taproom
Anthony's on The Hill
Pizza Tonight
Stroops Heroic Dogs

Grace Street Overlook
Schindler Gallery
St.John's Church
Libby Hill Park
Chimborazo Park
Chimborazo Playground
Oakwood Cemetery
Evergreen Cemetery
Church Hill Train Tunnel
Great Shiplock Park

Cyclus Bike Shop
Inn at Patrick Henry's
Roaring Pines
Gather Home and Garden
Urban Set Bride
Seven Hills Studio
Jade's Multicultural Salon
Blackbird Salon

The greater Church Hill area is a compact, walkable collection of neighborhoods with architecture dating from the early 1800s. Make a day of it and enjoy great food and drink, amazing views of the Richmond skyline, relaxing public spaces, a living sense of American history, and easy access to the James River, Capital Trail, and downtown.

Alamo BBQ
Union Market
Metzger Bar and Butchery
Jus' Fish
Sub Rosa Bakery
The Roosevelt
Patrick Henry Pub
The Dog and Pig Show
Proper Pie
Captain Buzzy's Beanery
Dutch & Co.
WPA Baker
Hill Cafe
Poe's Pub
Millie's Diner
23rd & Main Taproom
Anthony's on The Hill
Pizza Tonight
Stroops Heroic Dogs

Grace Street Overlook
Schindler Gallery
St.John's Church
Libby Hill Park
Chimborazo Park
Chimborazo Playground
Oakwood Cemetery
Evergreen Cemetery
Church Hill Train Tunnel
Great Shiplock Park

Cyclus Bike Shop
Inn at Patrick Henry's
Roaring Pines
Gather Home and Garden
Urban Set Bride
Seven Hills Studio
Jade's Multicultural Salon
Blackbird Salon

The greater Church Hill area is a compact, walkable collection of neighborhoods with architecture dating from the early 1800s. Make a day of it and enjoy great food and drink, amazing views of the Richmond skyline, relaxing public spaces, a living sense of American history, and easy access to the James River, Capital Trail, and downtown.

Alamo BBQ
Union Market
Metzger Bar and Butchery
Jus' Fish
Sub Rosa Bakery
The Roosevelt
Patrick Henry Pub
The Dog and Pig Show
Proper Pie
Captain Buzzy's Beanery
Dutch & Co.
WPA Baker
Hill Cafe
Poe's Pub
Millie's Diner
23rd & Main Taproom
Anthony's on The Hill
Pizza Tonight
Stroops Heroic Dogs

Grace Street Overlook
Schindler Gallery
St.John's Church
Libby Hill Park
Chimborazo Park
Chimborazo Playground
Oakwood Cemetery
Evergreen Cemetery
Church Hill Train Tunnel
Great Shiplock Park

Cyclus Bike Shop
Inn at Patrick Henry's
Roaring Pines
Gather Home and Garden
Urban Set Bride
Seven Hills Studio
Jade's Multicultural Salon
Blackbird Salon

The greater Church Hill area is a compact, walkable collection of neighborhoods with architecture dating from the early 1800s. Make a day of it and enjoy great food and drink, amazing views of the Richmond skyline, relaxing public spaces, a living sense of American history, and easy access to the James River, Capital Trail, and downtown.

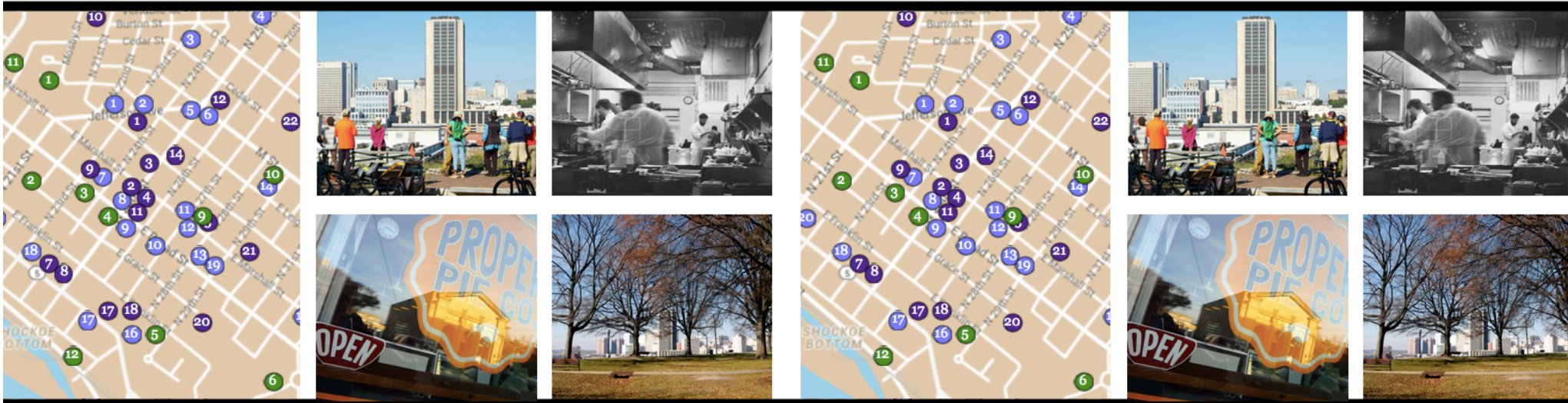
Alamo BBQ
Union Market
Metzger Bar and Butchery
Jus' Fish
Sub Rosa Bakery
The Roosevelt
Patrick Henry Pub
The Dog and Pig Show
Proper Pie
Captain Buzzy's Beanery
Dutch & Co.
WPA Baker
Hill Cafe
Poe's Pub
Millie's Diner
23rd & Main Taproom
Anthony's on The Hill
Pizza Tonight
Stroops Heroic Dogs

Grace Street Overlook
Schindler Gallery
St.John's Church
Libby Hill Park
Chimborazo Park
Chimborazo Playground
Oakwood Cemetery
Evergreen Cemetery
Church Hill Train Tunnel
Great Shiplock Park

Cyclus Bike Shop
Inn at Patrick Henry's
Roaring Pines
Gather Home and Garden
Urban Set Bride
Seven Hills Studio
Jade's Multicultural Salon
Blackbird Salon

A VISITOR'S GUIDE TO CHURCH HILL

A VISITOR'S GUIDE TO CHURCH HILL



PARKS • DINING • HISTORY
BIKE & WALKING TOURS

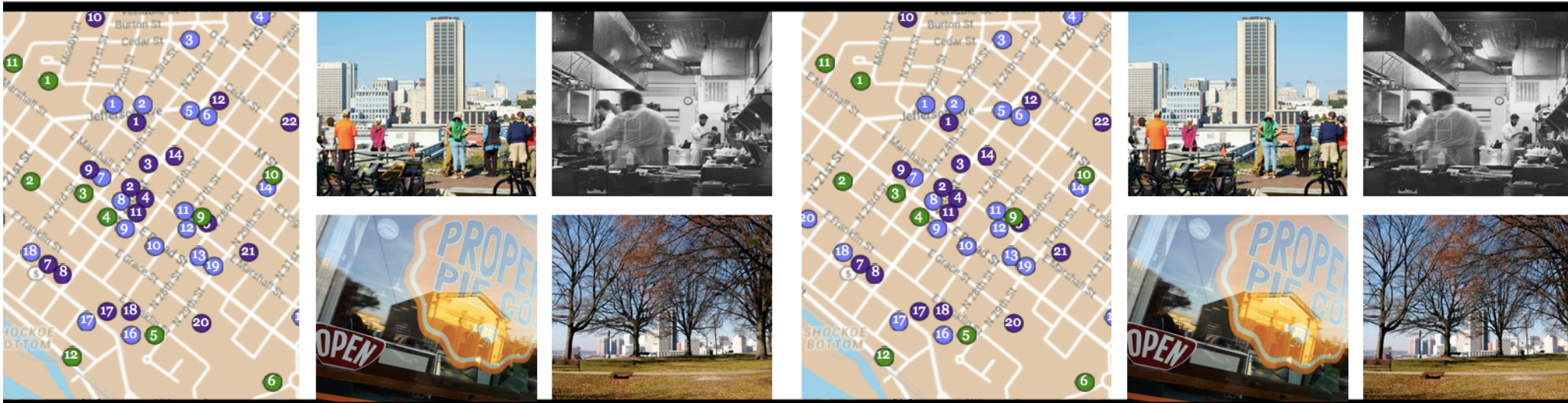
chpn.net/visit

PARKS • DINING • HISTORY
BIKE & WALKING TOURS

chpn.net/visit

A VISITOR'S GUIDE TO CHURCH HILL

A VISITOR'S GUIDE TO CHURCH HILL



PARKS • DINING • HISTORY

chpn.net/visit

PARKS • DINING • HISTORY

chpn.net/visit